

Tio Tuca

choro

Rio de Janeiro, 2 de dezembro de 2005

Mauricio Carrilho

para o Imperador do Lgo do Machado

♩ = 90



F6

G \flat 6

C7/G



F $^{\circ}$

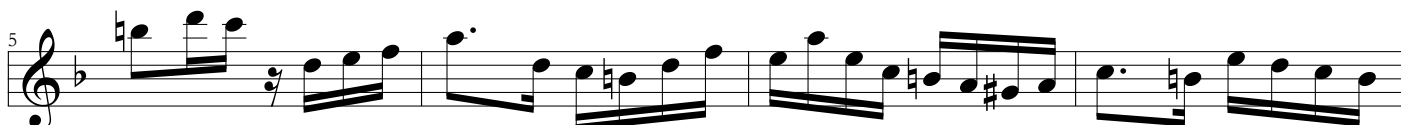
F6

D m

A m

B7

E7



C7/G

F6

G \flat 6

C7/G



E \flat 6/G

F7

B \flat 6

D7/A

G m

B \flat m6

F/C

G \flat 7 \flat 5

Φ ₂¹



1
F6 C7

2
F6 A7

D m

B \flat /D

D m 6

E7



D m /F

E \flat /G

A7

D m



A m

E7

A7

F7

B \flat 6



29 A^b7 D^b $B^b m6$ $A7$ $Dm7$ E^b/G

33 Dm/F $A7$ Dm $A7$ Dm $C7$ F $F7$

Ao $\text{S} e \text{O}^1$

37 B^b6 $A7$ B^b6 F/E^b B^b/D G^b7/D^b Cm

41 $A m7^b5$ $D7^b9$ Gm $A7^b9$ Dm $E7$ $A7$ Dm $Dm7^b5$

45 B^b7^9 E^b $A7$ $Dm7$ B^b7

49 $E^b m6$ B^b/D $G7^9$ $Cm7$ $F7^{13}$ B^b $F7$

O^1

53 B^b $C7$ F

Ao $\text{S} e \text{O}^2$