

Foi assim

valsas

Eduardo Souto

Adap: Luiz Flavio Alcofra

Bb7^{b9} Bb7 Eb7

Ab7^{b9} Ab7 Db

Ab7



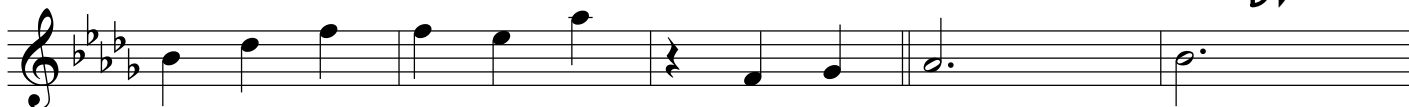
6

Db6

Ab7

Db6

Gb6/Db



11

Db6

Ab7

Db6

F7

Bbm



16

Eb7

Ab7

Bb7



21

Eb7

Ab7

Db



26

Gb6/Db

Db

Ab7

Db

F7^{b9}



31

Bbm

G⁰

Ab7

Db6



36

D⁰

Ebm

Ab7

Db6

⊕



41 Bb_m $Cm7^b5$ $F7$

46 $F7$ Bb_m

51 F $C7$ $F7$

56 Bb_m $Cm7^b5$

61 $F7$ Bb_m $Bb7$

66 Eb_m $F7$

71 Bb_m $^1 F7$ $^2 Bb_m Ab7$ \emptyset $Db6$