

Para todos

samba carnavalesco

Eduardo Souto

Norberto Bittencourt

Adap: Luiz Flavio Alcofra



E7

A

E7



4

A

E7

A

E7

A



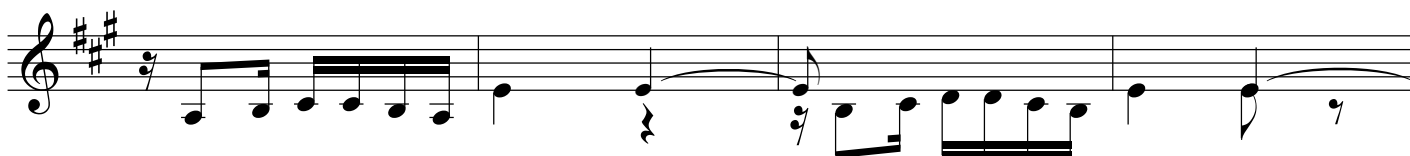
FIM

9

A

E7

A



13

E7

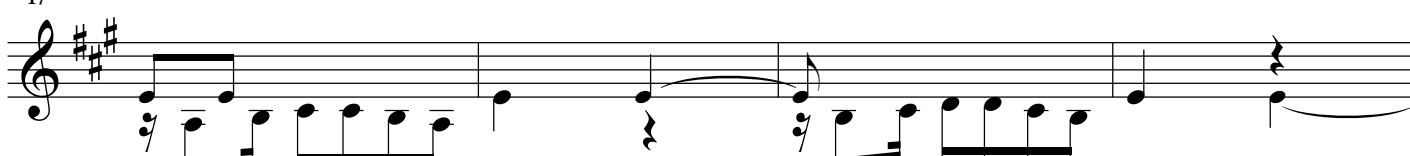
A



17

E7

A



21

E7

A

A



26

B_m

E7

A

E7



31

¹ E7

A

² E7

A



Ao 
e FIM