

ACARICIANDO

(choro)

Bandão EPM - 2015
Tuba

Abel Ferreira
Arranjo: Lucas Porto

7

A 14

26

32

38

44

50

B

56

62

68

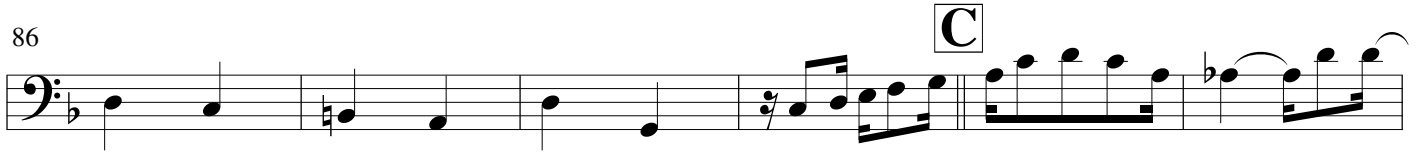
74

80

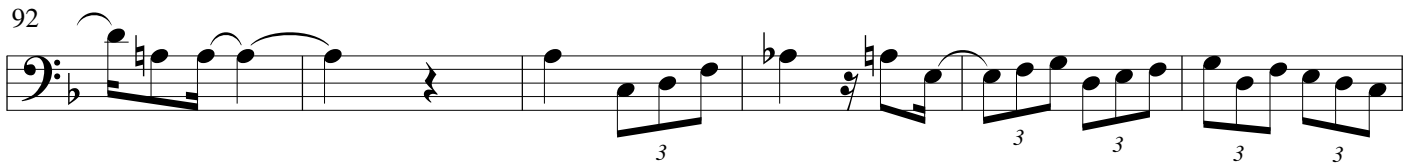
Detailed description: The musical score is written in bass clef with a key signature of two flats (Bb) and a 2/4 time signature. It consists of 14 staves of music. The first staff starts with a whole note G2. The second staff contains a measure with a whole note G2, followed by a measure with a whole note G2, and then a measure with a whole note G2. A box labeled 'A' is placed above the second measure. The number '14' is placed above the third measure. The third staff contains a whole note G2, followed by a whole note G2, and then a whole note G2. The number '26' is placed above the first measure. The fourth staff contains a whole note G2, followed by a whole note G2, and then a whole note G2. A symbol resembling a section sign (§) is placed above the second measure. The number '32' is placed above the first measure. The fifth staff contains a whole note G2, followed by a whole note G2, and then a whole note G2. The number '38' is placed above the first measure. The sixth staff contains a whole note G2, followed by a whole note G2, and then a whole note G2. The number '44' is placed above the first measure. The seventh staff contains a whole note G2, followed by a whole note G2, and then a whole note G2. A symbol resembling a section sign (§) is placed above the second measure. The number '50' is placed above the first measure. The eighth staff contains a whole note G2, followed by a whole note G2, and then a whole note G2. The number '56' is placed above the first measure. The ninth staff contains a whole note G2, followed by a whole note G2, and then a whole note G2. A box labeled 'B' is placed above the second measure. The number '62' is placed above the first measure. The tenth staff contains a whole note G2, followed by a whole note G2, and then a whole note G2. The number '68' is placed above the first measure. The eleventh staff contains a whole note G2, followed by a whole note G2, and then a whole note G2. The number '74' is placed above the first measure. The twelfth staff contains a whole note G2, followed by a whole note G2, and then a whole note G2. The number '80' is placed above the first measure. The thirteenth staff contains a whole note G2, followed by a whole note G2, and then a whole note G2.

ACARICIANDO (Tuba) - 2

86



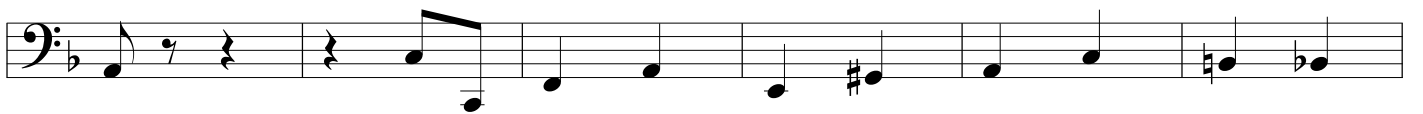
92



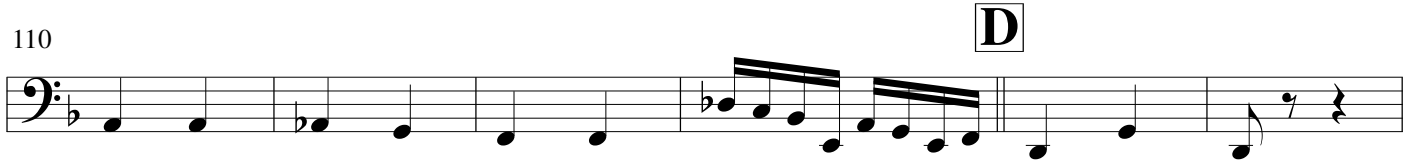
98



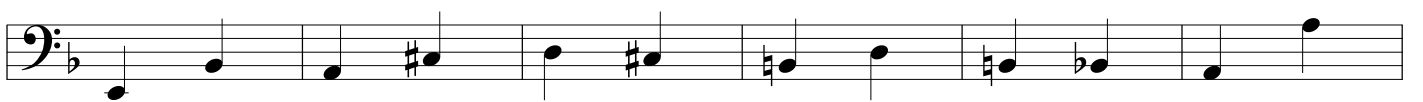
104



110



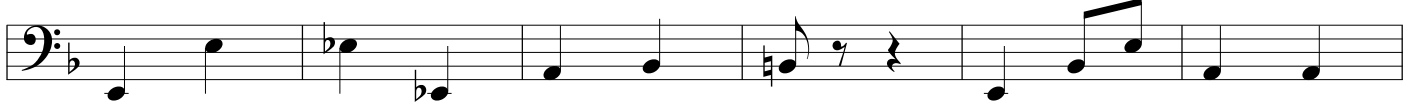
116



122



128



134



140



146



151

