

Saias curtas

CHORO

P7409

2

REPERTÓRIO

PERINELLI, LUCIA E COMP.

Saias Curtas



DECCA

GGG

Publicação Semanal

N. de Orchestra 2107 - N. de Piano 571

PIANO E 8 INSTRUMENTOS.
 PIANO-VIOLINO A-VIOLINO B-FLAUTA-CLARINETE
 TROMBONE-PISTON-CELLO-BASSO

SALAS CURTAS

MAXIXE

Letra de H. Pinto.

Aurelia Bezerra

Musica de Decca.

PIANO

First system of piano accompaniment, featuring treble and bass staves with musical notation and a dynamic marking of *f*.

Second system of piano accompaniment, ending with the word "FIM" and a dynamic marking of *mf*.

Third system of piano accompaniment.

Fourth system of piano accompaniment.

Fifth system of piano accompaniment.

Partial musical notation on the right margin, showing a treble and bass staff.

Partial musical notation on the right margin, showing a treble and bass staff.

Partial musical notation on the right margin, showing a treble and bass staff.

Linda
 a razã
 D.fula
 para a
 Tal pe
 me dei
 Sem sa
 respon

Decca.



I

II

Linda moça perguntou-me
a razão porque qualquer
D. Fulano olha sempre
para as pernas da mulher!
Tal pergunta indiscreta
me deixou atrapalhado...
Sem saber como explicar-me
respondi, desconcertado:

Onde quer que haja perna
de mulher, bem entendido,
ninguém come, ninguém bebe,
ninguém fica distraído...
Cada qual procura o meio
de melhor se colocar,
e depois, barbaridade!
entra em jogo o tal olhar!...

ESTRIB.

Saias bem curtas
pelos joelhos,
transformam as pernas) bis
em dois espelhos...
Por isso a que
qualquer Adão
as pernas olha) bis
com devoção!

FORTALEZA CEARÁ

2/197 (571) Est. Graph. Musical U. della Letta.

Aurália Bizerra



SALAS CURTAS

MAXIXE

VIOLINO A

Decca.

Musical score for Violino A, consisting of seven staves of music. The first staff begins with a treble clef, a key signature of two flats (B-flat and E-flat), and a 4/4 time signature. It starts with a dynamic marking of *f* (forte) and includes a fermata over a measure. The second staff ends with the word "FIM." (Finis). The third staff begins with a dynamic marking of *mf* (mezzo-forte). The fourth and fifth staves are marked with "1." and "2." respectively, indicating first and second endings. The sixth staff continues the melodic line. The seventh staff also features first and second endings, marked "1." and "2.", and concludes with a dynamic marking of *Dal. ff* (Dolcissimo fortissimo).

2192

FORTALEZA - CEARÁ



Anzella Bezerra

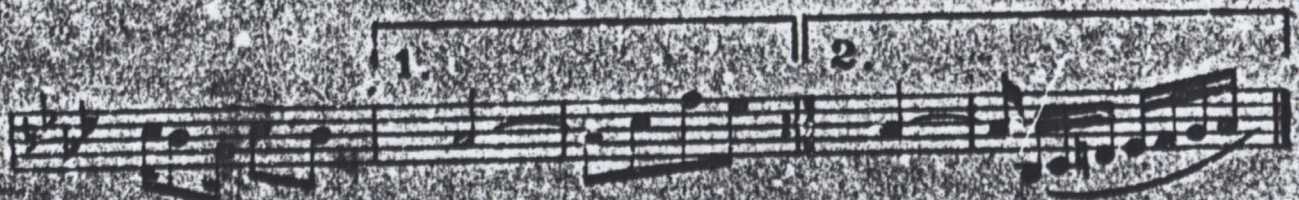
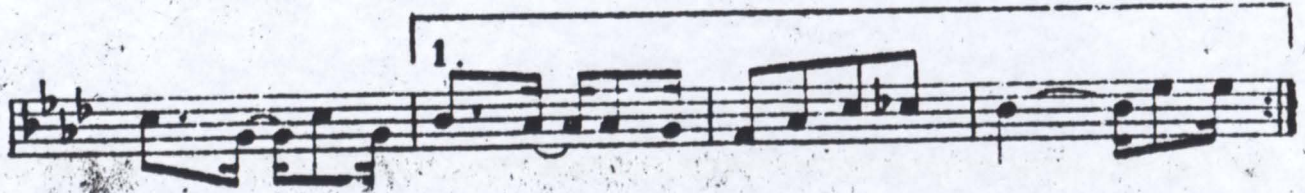
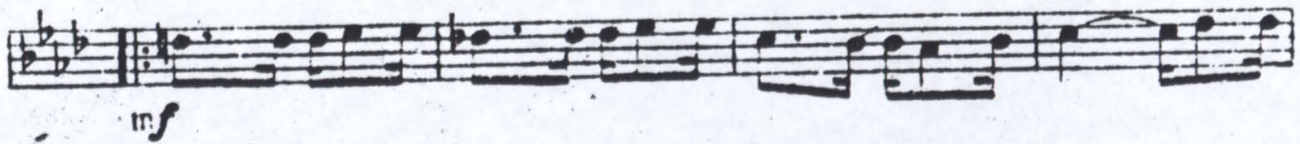
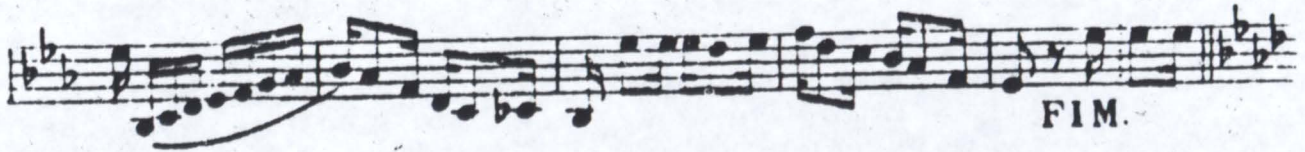
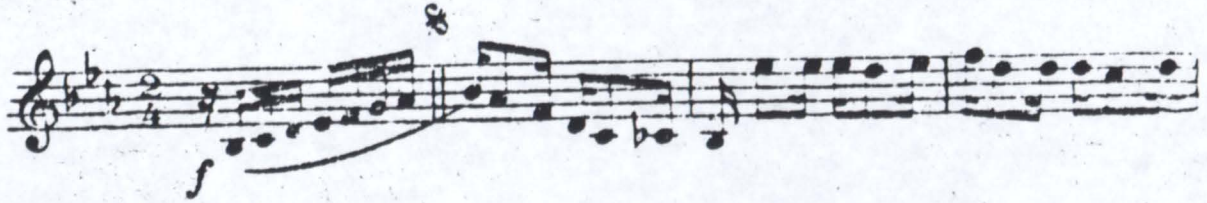
OBOE'

SAIAS CURTAS

MAXIXE

VIOLINO B

Decca.



Dal #

©197

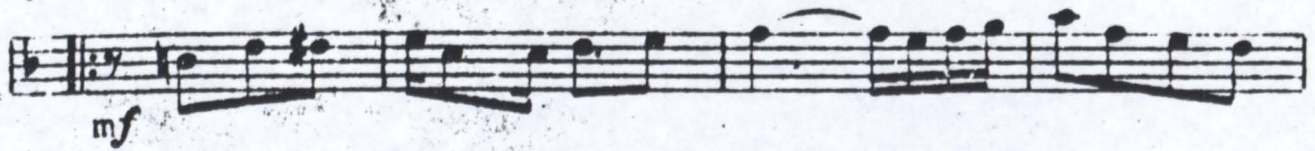
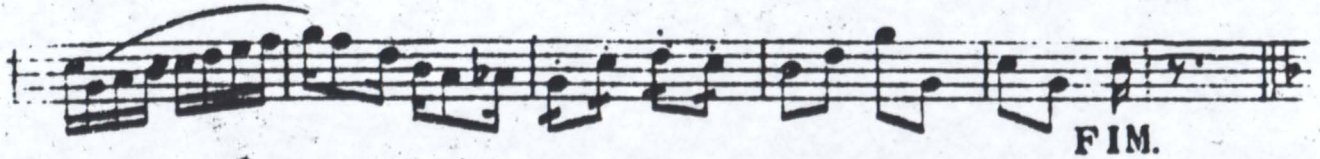
FORTALEZA - CEARÁ

SAIAS CURTAS

MAXIXE

SAXOPHONE Mib

Decca.



DAI 

2197

FORTALEZA - CEARÁ

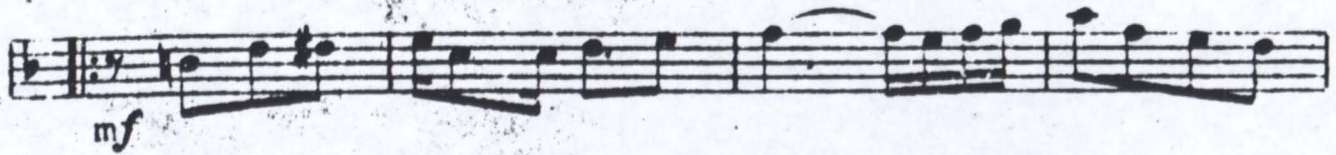
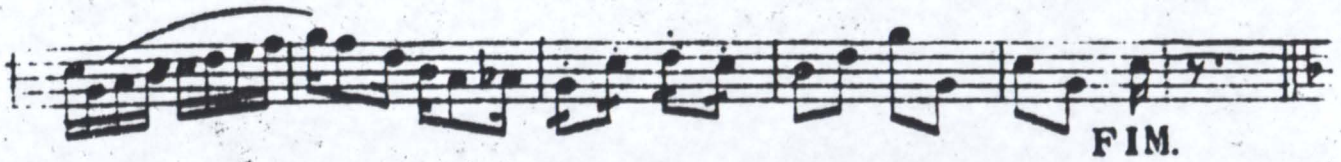


SAIAS CURTAS

MAXIXE

SAXOPHONE mib

Decca.



Dal trill

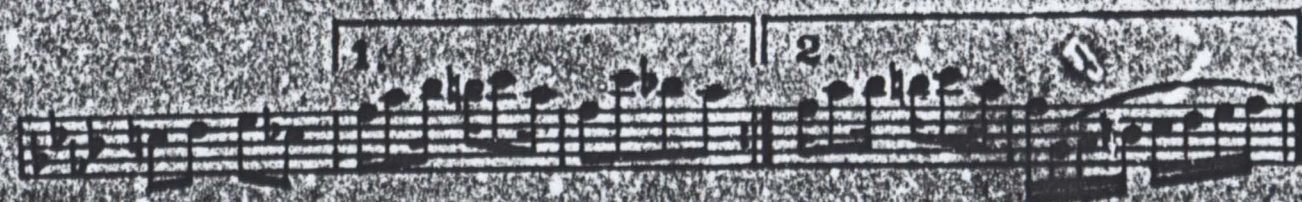
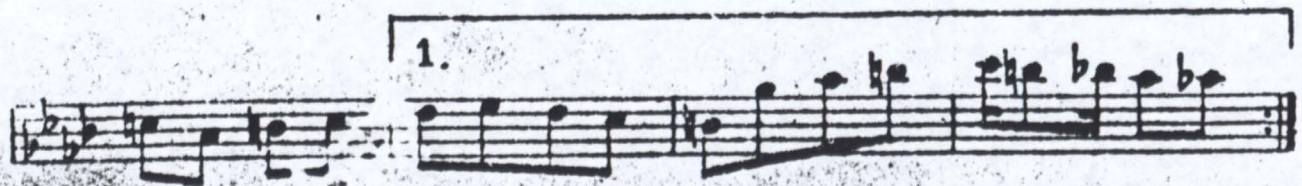
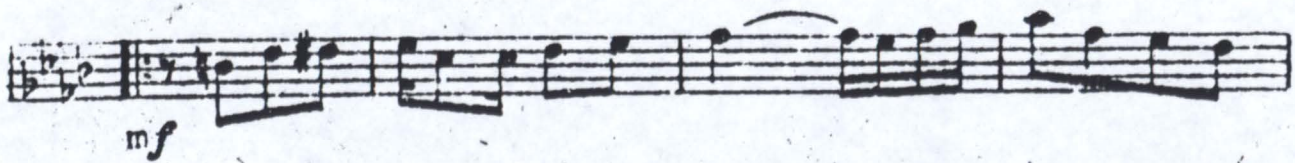
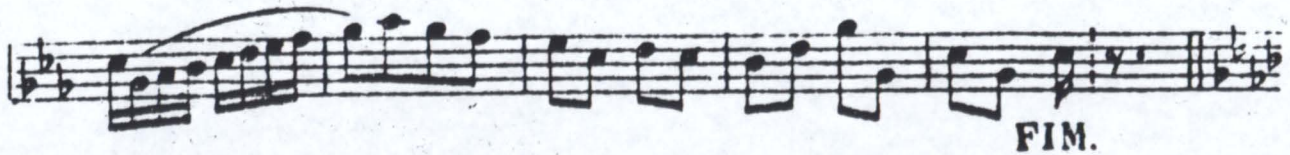


SAIAS CURTAS

MAXIXE

CELLO

Decca.



Dal 8

2197

FORTALEZA - CEARÁ

Aurelia Bezerra



SAIAS CURTAS

MAXIXE

PISTON Sib

Decca.

Dal Sib

2197

FORTALEZA - CEARÁ

Aurelia Bezerra



SAIAS CURTAS

MAXIXE

FLAUTA

Decca.

Musical score for Flute, consisting of seven staves. The first staff begins with a treble clef, a key signature of two flats (B-flat and E-flat), and a 2/4 time signature. The music starts with a rest followed by a series of eighth notes. A dynamic marking of *f* (forte) is placed below the first staff. The second staff ends with the word "FIM." (Finis). The third staff begins with a dynamic marking of *mf* (mezzo-forte). The fourth and fifth staves are enclosed in a box and labeled "1." and "2." respectively, indicating first and second endings. The sixth and seventh staves are also enclosed in a box and labeled "1." and "2." respectively, indicating first and second endings. The score concludes with a double bar line.

Dal. N.

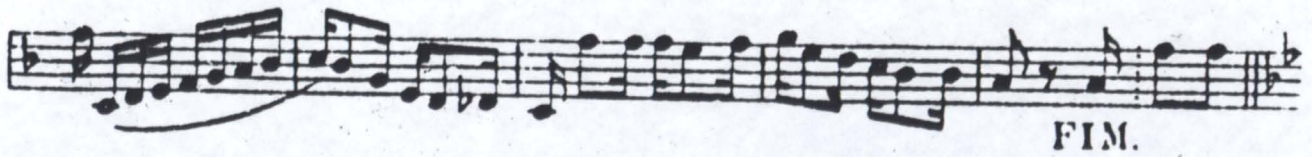
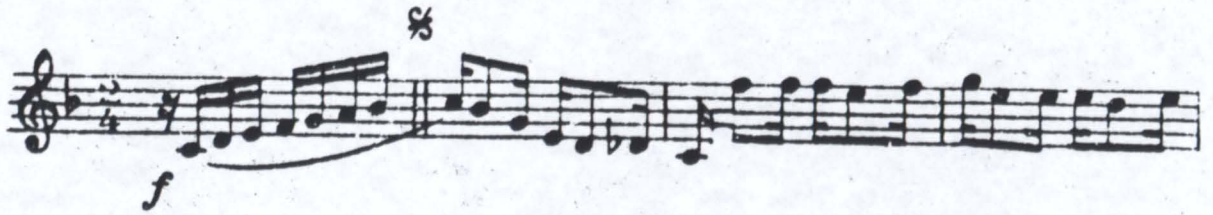


SAIAS CURTAS

MAXIXE

CLARINO Si b

Decca.



Dal. 8

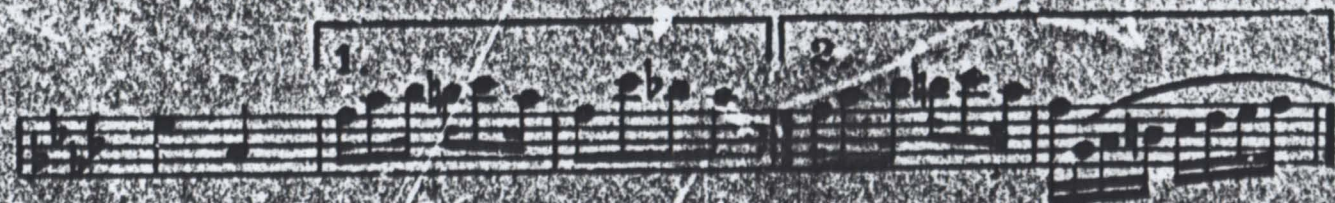
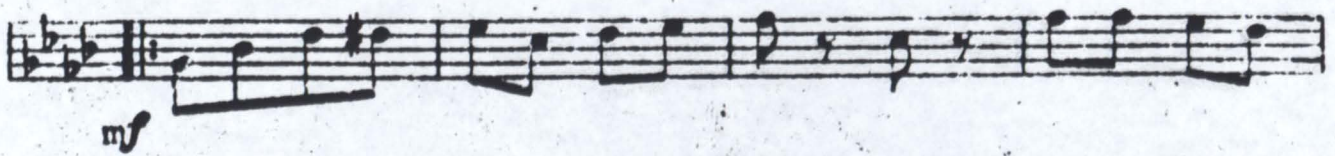
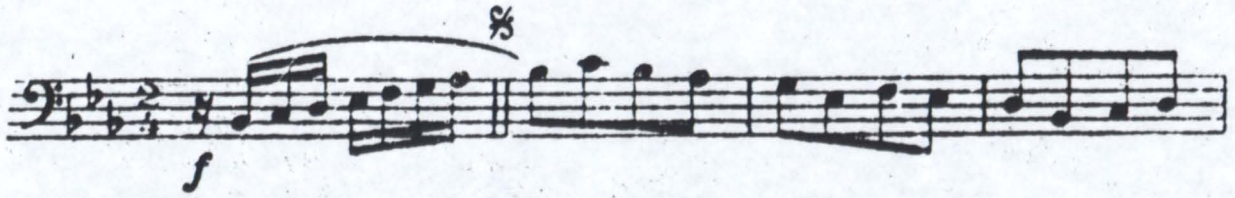


SAIAS CURTAS

MAXIXE

BASSO

Decca.



Dal. &

2197

FORTALEZA - CEARÁ