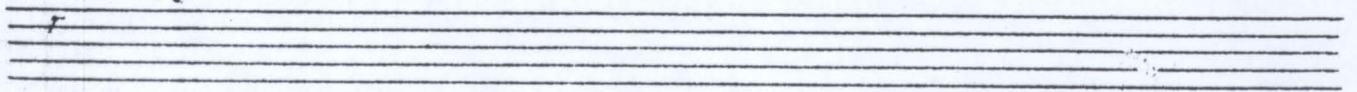


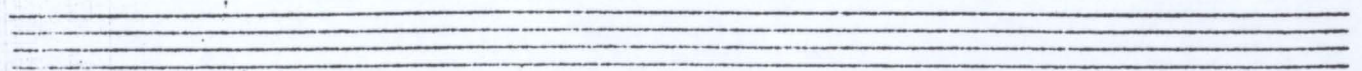
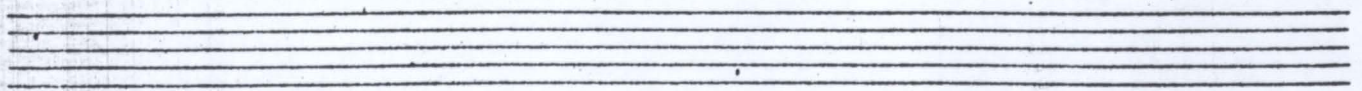
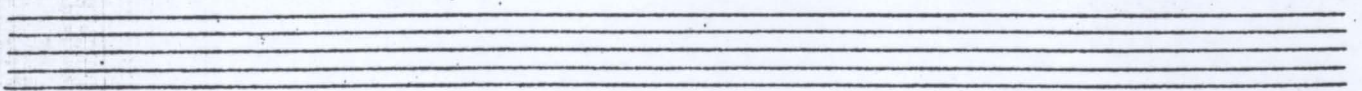
# Quadrilha Blice

por Rangel

Ja



Handwritten musical score for "Quadrilha Alice" by Rangel. The score consists of 11 staves of music. The first staff is marked "2a" and has a 2/4 time signature. The second staff is marked "3a" and has a 6/8 time signature. The music features various rhythmic patterns, including eighth and sixteenth notes, and rests. There are several key signatures and time signature changes throughout the piece. The notation includes stems, beams, and various accidentals (sharps, flats, naturals). The piece concludes with a double bar line and a repeat sign.



Handwritten musical notation on a five-line staff. It begins with a treble clef, a key signature of one flat (B-flat), and a 2/4 time signature. The notation consists of a series of chords and melodic lines.

Second staff of handwritten musical notation, continuing the piece with various chordal textures.

Third staff of handwritten musical notation, featuring a mix of eighth and sixteenth notes.

Fourth staff of handwritten musical notation, showing a progression of chords with some accidentals.

Fifth staff of handwritten musical notation, ending with a double bar line and a final chord.

Sixth staff of handwritten musical notation, starting with a treble clef and a key signature of one flat.

Seventh staff of handwritten musical notation, continuing the melodic and harmonic development.

Eighth staff of handwritten musical notation, with various rhythmic patterns.

Ninth staff of handwritten musical notation, including a handwritten annotation "# 1<sup>a</sup> 2<sup>or</sup>" above the staff.

Tenth staff of handwritten musical notation, showing a change in the melodic line.

Eleventh staff of handwritten musical notation, with a handwritten annotation "# 3<sup>a</sup> 4<sup>a</sup> ver" above the staff.

Twelfth staff of handwritten musical notation, featuring a treble clef and a key signature of one flat.

Thirteenth staff of handwritten musical notation, ending with a double bar line and a final chord.