

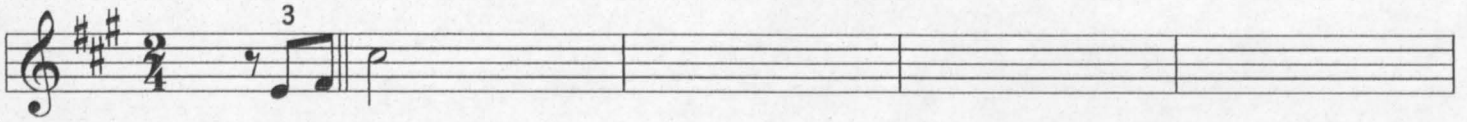
Linda Flor

samba-canção

Henrique Vogeler, Marques Porto e Luiz Peixoto

harmonização: Mauricio Carrilho

A7M⁹ A7⁹ A⁶ A^{#5}9 A^{add9} A^{#5}9 A⁶ A7M⁹



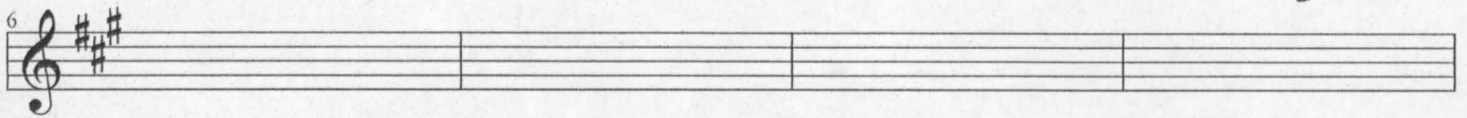
C^{#m}7⁹

G^m6

F^{#7} #5

B^m7

C^{#m}7^{b5}/_B



B^m7

G^m/_{Bb}

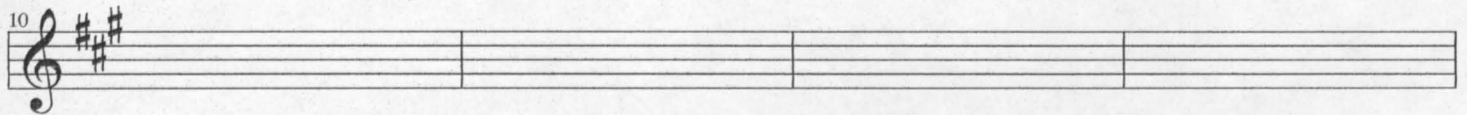
F^{#m}/_A

E^m/_G

D⁶/_{F#}

G^m6

D⁶/_{F#}



E7¹³

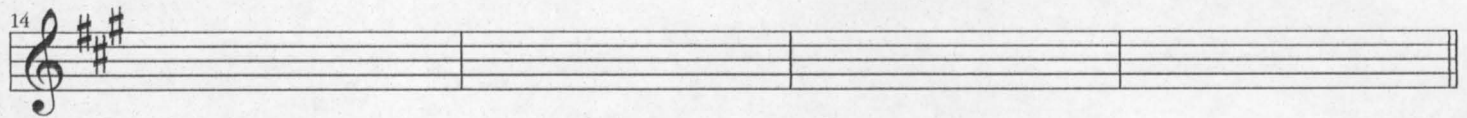
E7^{b13}

C^{#7}/_{G#}

F^{#7}

B^m7⁹

E7¹³



A7M⁹

A7⁹

A⁶

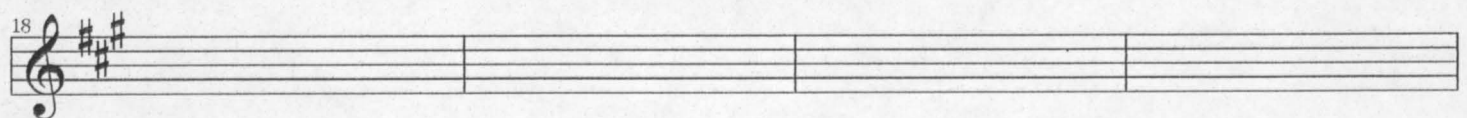
A^{#5}9

A^{add9}

A^{#5}9

A⁶

A7M⁹



C^{#m}7^{b5}/₉

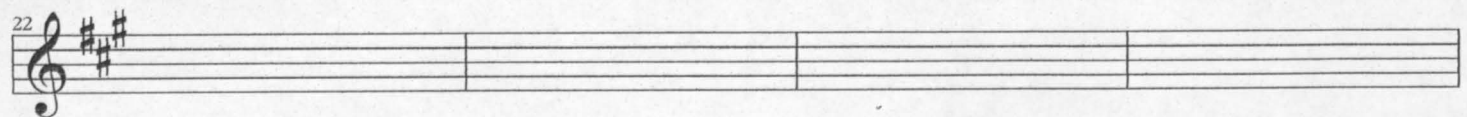
G^m6

F^{#7} #5

B^m7

F^{#7}/_{C#}

B^m/_D

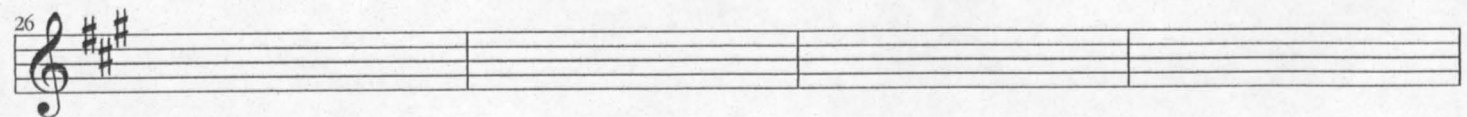


F/_{Eb}

D^m6

A^{add9}/_{C#}

F^{#7} #5



B7

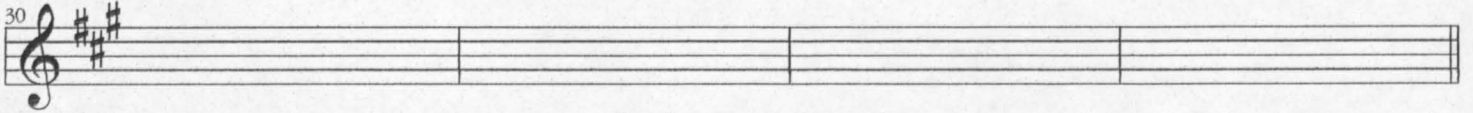
E7¹³

A7M

G7M

B7/_{F#}

E7M

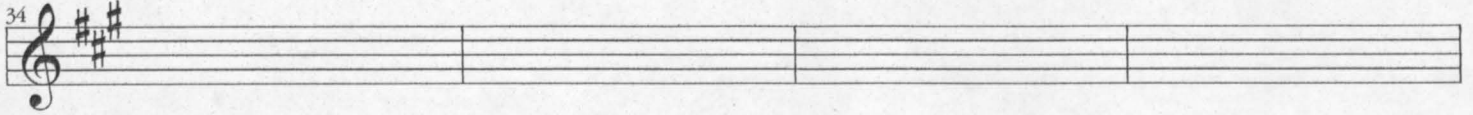


B7/_E

E7M

D#m7^{b5} G#7^{#5}

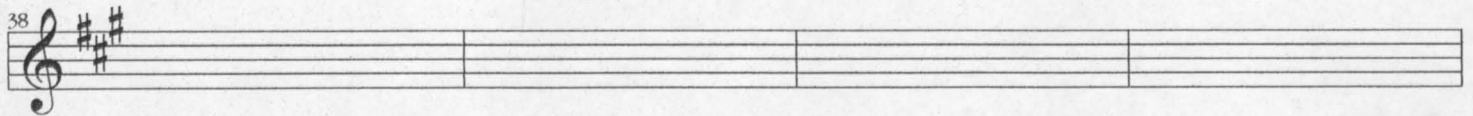
G#m7^{b5} C#7^{b9}



F#m7 G^o

E7M/_{G#} C#m7 F#7

B7⁹ C#m6



A^{m6}/_C B7

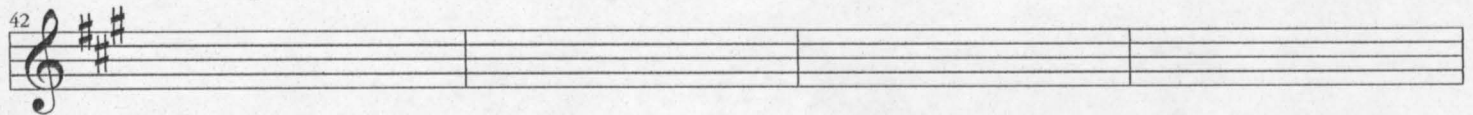
B^{m6}

A7M

A^o

G#7^{b9}

G#m7^{b5} C#7^{b9}



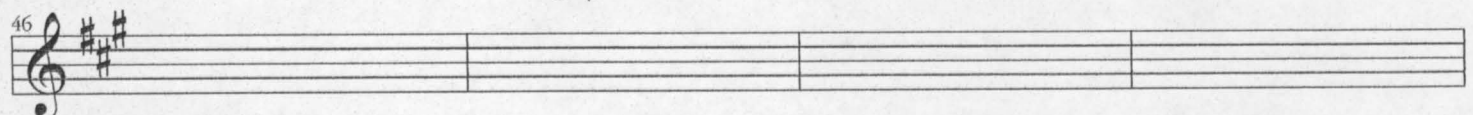
F#m G^o

E⁶/_{G#} C#m7 F#7

B7

E⁷₄

E7



G⁷₄ G7

C

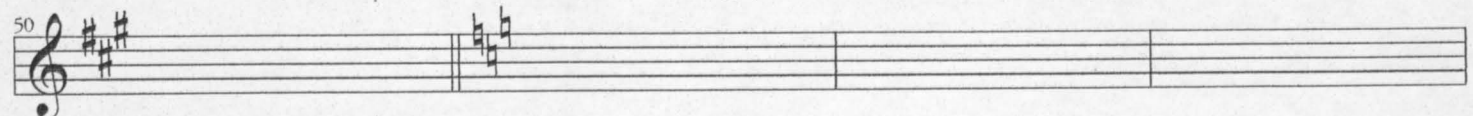
C/_{Bb}

A^{m6}

F^{m6}/_{Ab}

C/_G

A^b_o



A^{m7}

G⁷/_B

C7M

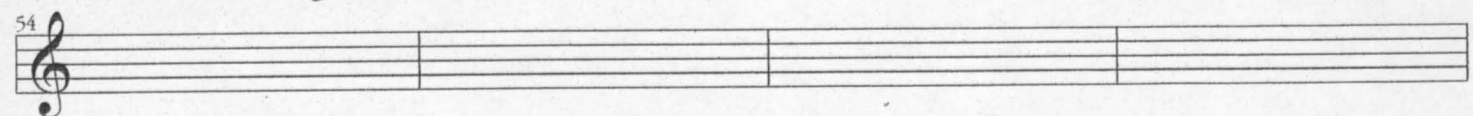
G^{m6}/_{Bb}

G^m/_A

A7^{b9}

D^{m7}

B^b/_D



D^{m6}

B^b/_D

D^{m7}

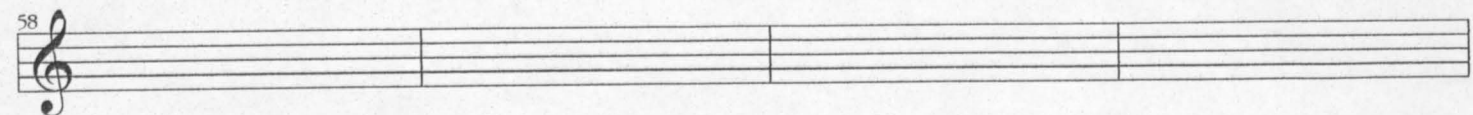
B^b^{m6}/_{Db}

A^m/_C

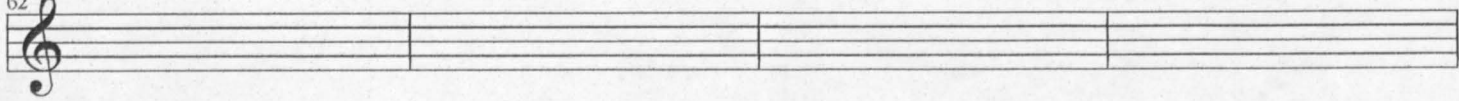
A7/_{C#}

D^{m7}

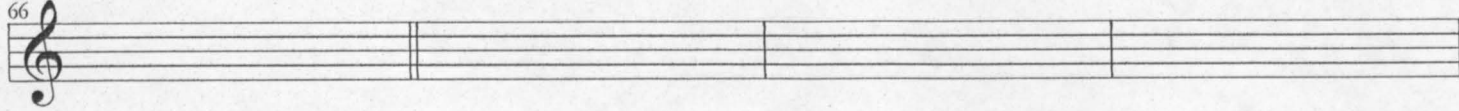
B^b^{m6}/_{Db}



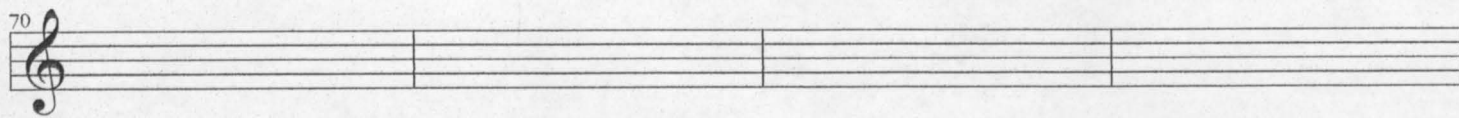
62 Dm/C $G7^9$ G/F $E7^{\#5}$ $A7^{\flat9}$



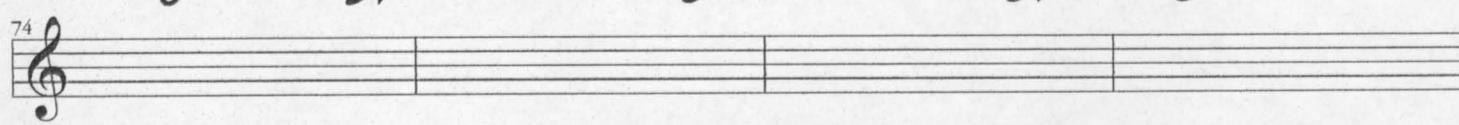
66 $Dm7$ $G7^9$ $C7M$ $C/B\flat$ $Am6$ $Fm6/Ab$ C/G $F\#7^{\flat5}$



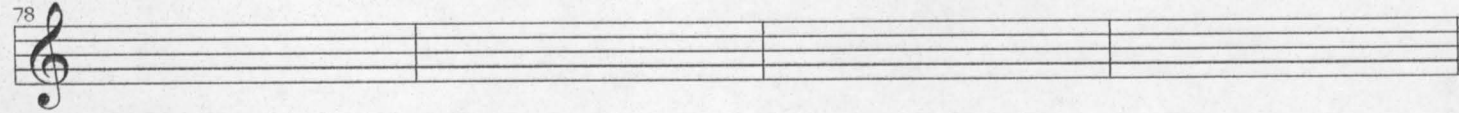
70 $F7M$ G/F $Em7^{\flat5}$ Gm/A $A7^{\flat9}$ $Dm6$ $B\flat m6/D\flat$



74 Am/C $Gm6/B\flat$ $Ab7M$ $E\flat6/G$ $Fm6$ $Ab/G\flat$ C/G



78 A/G F/G $G7^{\flat9}$ $Am6$



82 $C/B\flat$ $Am6$ $Fm6/Ab$ $C7M913/G$

