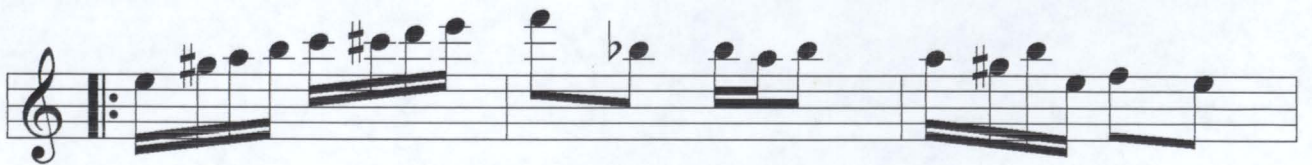


Polucena

Polka

J. A. da S. Callado



"Polocena"

1. 2. Coda

D.C. al Coda

Detailed description of the musical score: The score is written on a single treble clef staff. It begins with a first ending (1.) consisting of a sequence of eighth notes. This is followed by a second ending (2.) which includes a key signature change to one flat (B-flat) and features a series of eighth notes with accents. The piece concludes with a Coda section, marked with a circled cross symbol and the word 'Coda'. The instruction 'D.C. al Coda' appears twice, once after the first ending and once after the second ending. The score contains various musical notations such as slurs, accents, and repeat signs.

