

QUADRILHA EM RE MAIOR Nº 1

CALLADO

1

5

9

13

17

21

25

29

33

QUADRILHA EM RE MAIOR Nº 1

CAILADO

1

1

5

9

Fine

9

13

17

21

25

D.S. al Fine

25

QUADRILHA EM RE MAIOR Nº1

CAILADO

1

5

9

13

17

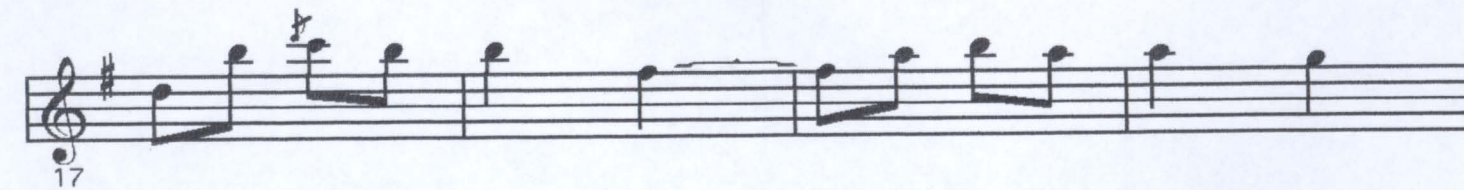
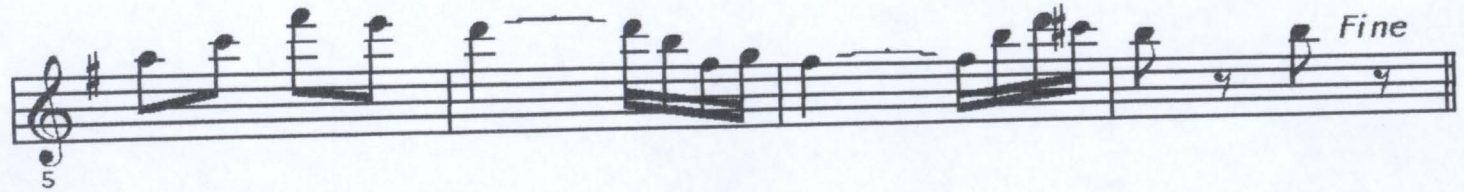
21

25

29

QUADRILHA EM RE MAIOR Nº 1

CAILADO



QUADRILHA EM RE MAIOR Nº 1

CAILADO

Musical staff 1, starting at measure 1. The key signature has two sharps (F# and C#) and the time signature is 2/4. The melody begins with a quarter note G4, followed by quarter notes A4, B4, and C5. The staff is numbered '1' at the beginning.

Musical staff 2, starting at measure 5. The melody continues with quarter notes D5, E5, and F#5, followed by quarter notes G5, A5, and B5. The staff is numbered '5' at the beginning.

Musical staff 3, starting at measure 9. The melody continues with quarter notes C6, B5, and A5, followed by quarter notes G5, F#5, and E5. The staff is numbered '9' at the beginning.

Musical staff 4, starting at measure 13. The melody continues with quarter notes D5, E5, and F#5, followed by quarter notes G5, A5, and B5. There are flat accidentals (b) under the notes G5 and B5. The staff is numbered '13' at the beginning. The word "Fine" is written above the final measure.

Musical staff 5, starting at measure 17. The melody continues with quarter notes C6, B5, and A5, followed by quarter notes G5, F#5, and E5. The staff is numbered '17' at the beginning.

Musical staff 6, starting at measure 21. The melody continues with quarter notes D5, E5, and F#5, followed by quarter notes G5, A5, and B5. The staff is numbered '21' at the beginning.

Musical staff 7, starting at measure 25. The melody continues with quarter notes C6, B5, and A5, followed by quarter notes G5, F#5, and E5. The staff is numbered '25' at the beginning.

Musical staff 8, starting at measure 29. The melody continues with quarter notes D5, E5, and F#5, followed by quarter notes G5, A5, and B5. The staff is numbered '29' at the beginning.