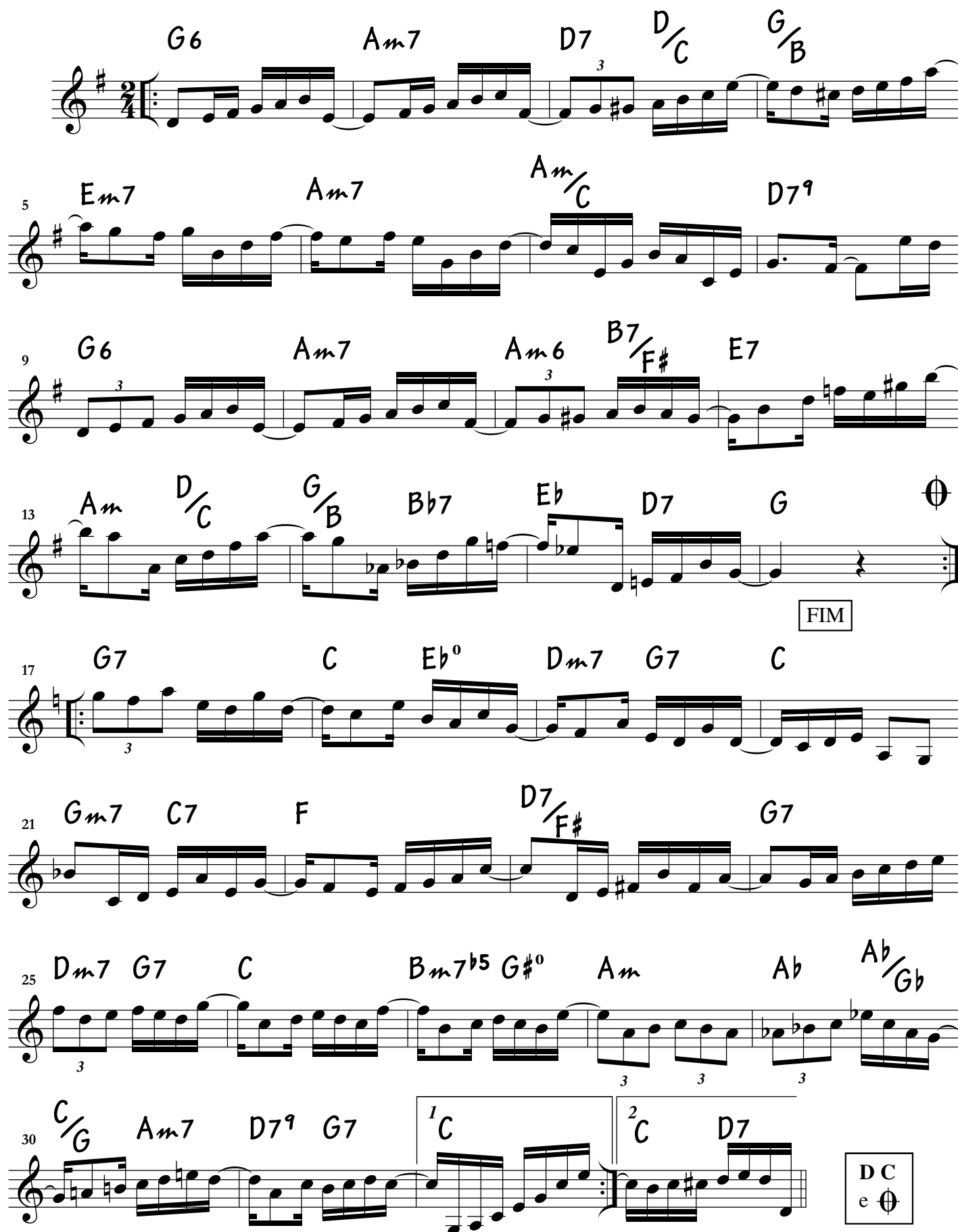


Labirinto

choro

Rossini Ferreira

Adap: Marcílio Lopes

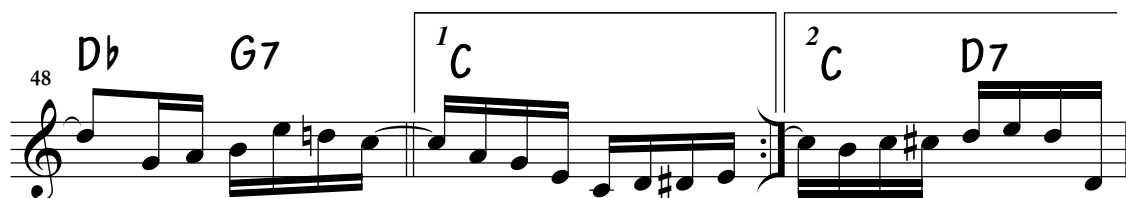
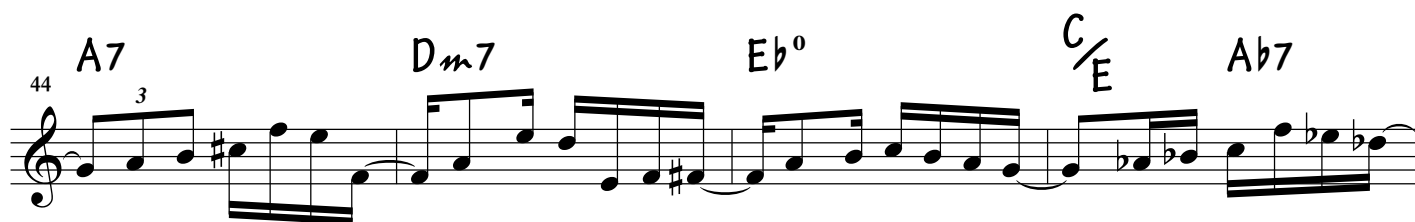
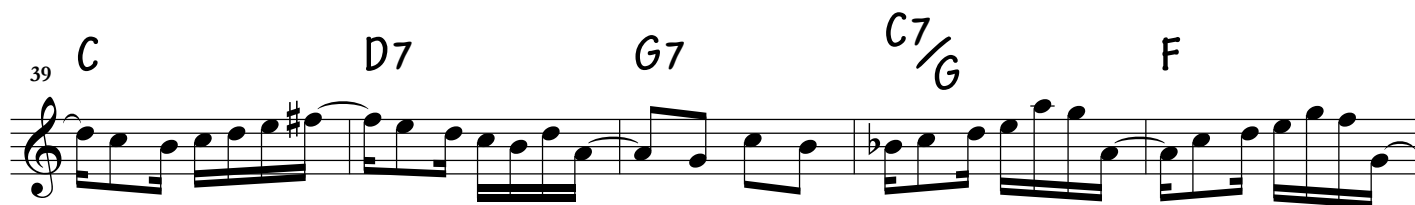
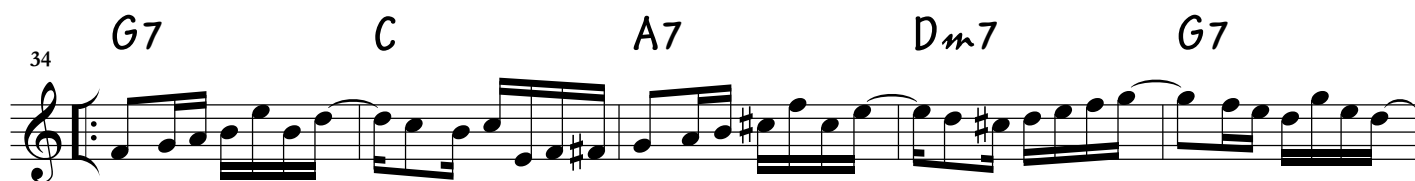


Chord progression and measure numbers:

- Measures 1-4: G6, Am7, D7, D/C, G/B
- Measures 5-8: Em7, Am7, Am/C, D7⁹
- Measures 9-12: G6, Am7, Am6, B7/F#, E7
- Measures 13-16: Am, D/C, G/B, Bb7, Eb, D7, G, \emptyset
- Measures 17-20: G7, C, Eb⁰, Dm7, G7, C
- Measures 21-24: Gm7, C7, F, D7/F#, G7
- Measures 25-28: Dm7, G7, C, Bm7b5, G#⁰, Am, Ab, Ab/Gb
- Measures 29-32: C/G, Am7, D7⁹, G7, 1st C, 2nd C, D7

Boxed text: FIM

Boxed text: D C e \emptyset



D C
e FIM