

194
CASAL
Flautista
Calado

Quadrilha - a Tagodeira "Cadaço"

1^a

Handwritten musical notation for the first part of the piece, 1st staff. It consists of four lines of music in treble clef, key of D major (two sharps), and 6/8 time signature. The notation includes various rhythmic patterns, including eighth and sixteenth notes, and rests.

Coda

Handwritten musical notation for the Coda section. It consists of four lines of music in treble clef, key of D major, and 6/8 time signature. The notation includes various rhythmic patterns, including eighth and sixteenth notes, and rests. The word "Fim" is written above the second line of the Coda section.

2^a

Handwritten musical notation for the second part of the piece, 2nd staff. It consists of three lines of music in treble clef, key of D major, and 2/4 time signature. The notation includes various rhythmic patterns, including eighth and sixteenth notes, and rests. The word "Fim" is written above the second line of the 2nd staff.

Handwritten musical notation on a five-line staff, featuring a treble clef, a key signature of two sharps (F# and C#), and a 6/8 time signature. The notation includes eighth and sixteenth notes with stems, and rests.

Handwritten musical notation on a five-line staff, continuing the piece with similar rhythmic patterns and note values.

Handwritten musical notation on a five-line staff, ending with a double bar line and the tempo marking 'Allegro'.

Handwritten musical notation on a five-line staff, starting with a 3^a (third) measure rest symbol and a treble clef.

Handwritten musical notation on a five-line staff, continuing the melodic line.

Handwritten musical notation on a five-line staff, featuring a series of eighth notes.

Handwritten musical notation on a five-line staff, with the word 'Coda' written above the notes.

Handwritten musical notation on a five-line staff, continuing the piece.

Handwritten musical notation on a five-line staff, with the word 'Fim' (End) written above the notes.

Handwritten musical notation on a five-line staff, featuring a series of eighth notes.

Handwritten musical notation on a five-line staff, ending with a double bar line and the tempo marking 'Allegro'.

Vire La-paste.



196

La

SAADOLHO

Handwritten musical notation for the first system, consisting of ten staves. The music is written in treble clef with a key signature of one sharp (F#) and a time signature of 2/4. The notation includes various rhythmic values such as eighth and sixteenth notes, rests, and accidentals. A double bar line with the word "Fim" above it is present on the third staff, indicating the end of a section. The notation is dense and characteristic of a melodic line.

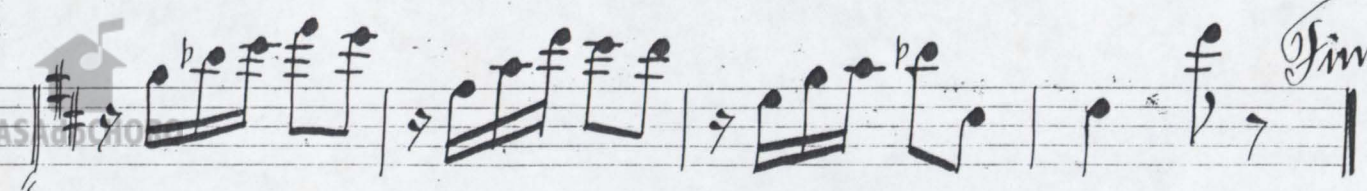
m D.C.

La

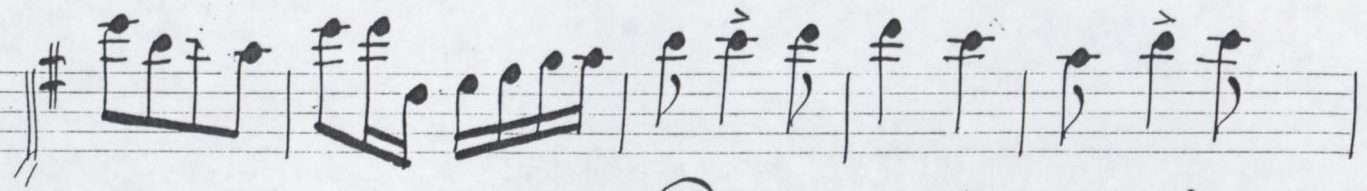
Handwritten musical notation for the second system, consisting of three staves. The music continues in the same key signature and time signature as the first system. It features similar rhythmic patterns and melodic development. The notation is consistent with the first system, showing a continuation of the piece.



Fim 197



1a = 2a e 3a ven



2a = 1a e 2a ven

