

# Aconteceu no Grajaú

*choro lento*

João Leal Brito

*Adap: Lucas Porto*

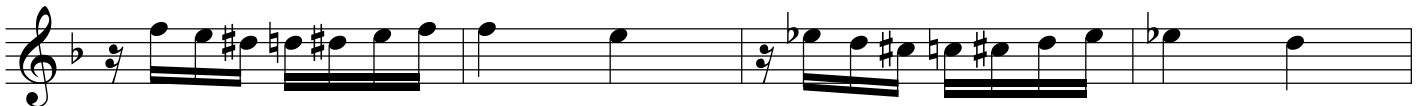
$B_m7^{\flat 5}$   $B^{\circ}$   $B^{\flat}m6$   $A7$   $A_m7^{\flat 5}$   $A^{\circ}$   $A^{\flat}m6$   $A^{\flat\circ}$



5  $Gm6$   $G^{\circ}$   $D_m/F$   $D_m/C$   $B^{\circ}$   $E7$   $B^{\flat}7$   $A7$



9  $D_m$   $D_m/C$   $B^{\circ}$   $Gm6/B^{\flat}$   $A_m7^{\flat 5}$   $A^{\circ}$   $F^{\sharp\circ}$   $G_m$



13  $Gm6/B^{\flat}$   $A7$   $D_m$   $D_m/C$   $B^{\circ}$   $A7$   $\Theta_2^1$   $D_m$   $A7$



17  $D6$   $F^{\sharp 7}/C^{\sharp}$   $A^{\sharp\circ}$   $B_m$   $G6$   $B^{\flat}7/F^{\sharp}$   $D^{\sharp\circ}$   $E_m$



21  $E_m/G$   $B^{\flat}7/F^{\sharp}$   $E_m$   $E_m6$   $E7$   $E/D$   $A7/C^{\sharp}$   $D/C$



25  $G/B$   $Gm/B^{\flat}$   $D/A$   $D/F^{\sharp}$   $E_m$   $A7$   $Cm6$   $B7$



29  $B^{\flat}7$   $B^{\flat}/A^{\flat}$   $E^{\flat}/G$   $E^{\flat}7/B^{\flat}$   $D/A$   $A7$   $D$



DC  
e  $\Theta_1$

Aconteceu no Grajaú / 2

33  $\Theta_1$   $D_m$   $D7/F^\#$   $Gm6$   $Am6$   $Gm6/Bb$   $Gm$   $Fm6/Ab$   $Cm/G$

38  $Cm6$   $Dm6$   $Cm6/Eb$   $D7$   $D7/F^\#$   $Gm$   $D7/A$   $B^0$

43  $Dm7b5$   $G7$   $G7/B$   $D^0$   $Cm$   $F7$   $F7/A$

47  $Bb/Ab$   $Eb7/G$   $Ab/Gb$   $D7$   $Gm$   $\Theta_2$   $Dm$

DC  
e  $\Theta_2$