

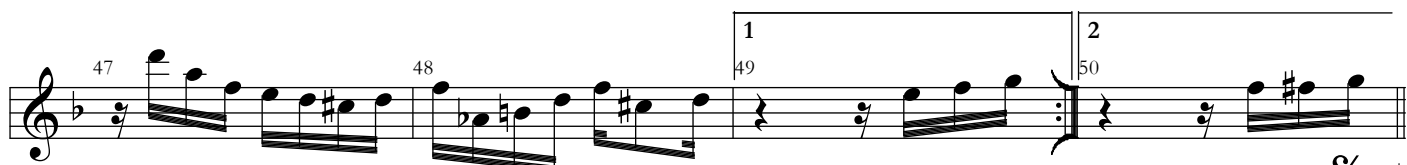
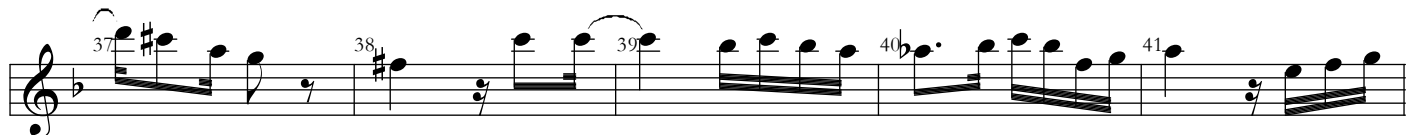
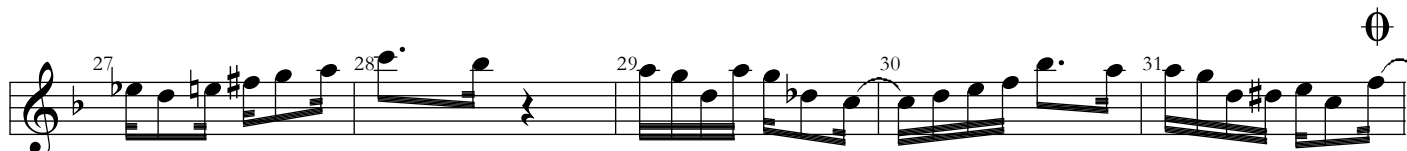
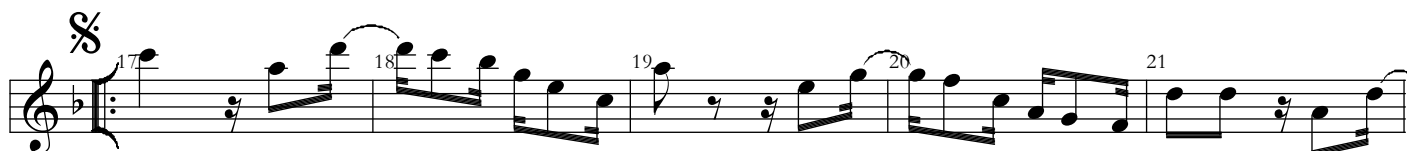
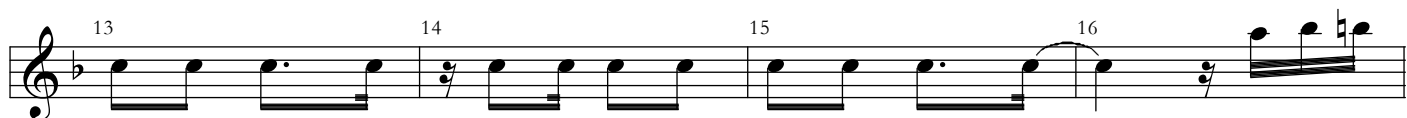
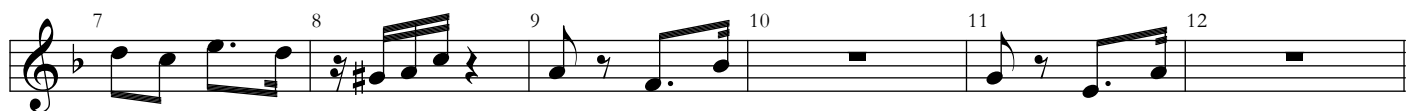
# Canto do Rio / bandolim

(choro)

Mauricio Carrilho

arranjo:

Mauricio Carrilho





Canto do Rio - bandolim - 2

Musical score for Canto do Rio - bandolim - 2, consisting of ten staves of music. The score is written in treble clef with a key signature of one flat (B-flat). The music features a variety of rhythmic patterns, including eighth and sixteenth notes, and rests. Measure numbers 51 through 102 are indicated above the notes. A repeat sign with first and second endings is present between measures 67 and 68. A 7-measure rest is shown above measure 76. A 3-measure rest is shown above measure 79. The score concludes with a double bar line at the end of measure 102.