

# Marcha-regresso

Tuba

Elton Medeiros,  
Mauricio Tapajós e Cacaso  
*Arr: Antonio Guerreiro*

Marcha rancho ♩ = 108



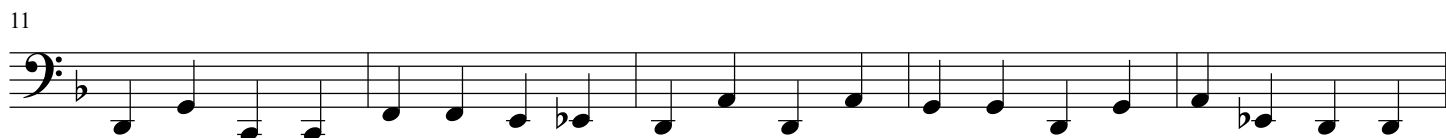
First musical staff, bass clef, common time (C). It begins with a series of eighth notes, followed by a triplet of eighth notes, and ends with a dynamic marking *p* (piano).

6



Second musical staff, bass clef, common time. It continues the melody with a triplet of eighth notes.

11



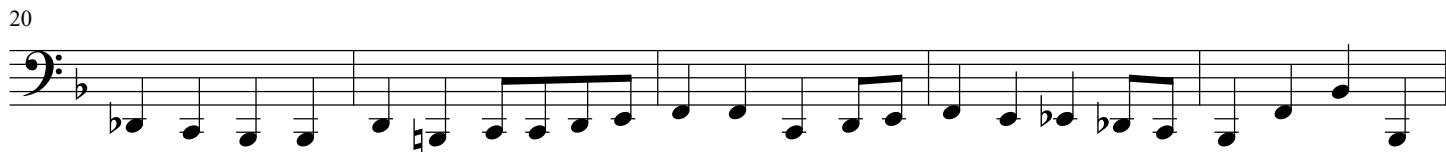
Third musical staff, bass clef, common time. It continues the melody with a series of eighth notes.

16



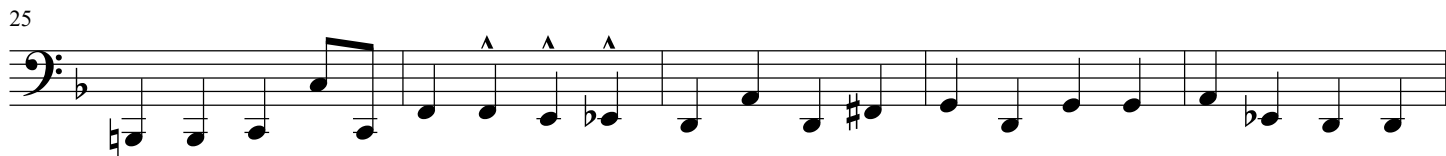
Fourth musical staff, bass clef, common time. It continues the melody with a series of eighth notes and a triplet.

20



Fifth musical staff, bass clef, common time. It continues the melody with a series of eighth notes.

25



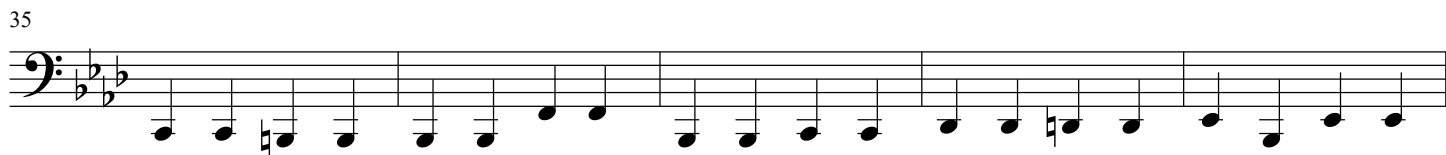
Sixth musical staff, bass clef, common time. It continues the melody with a series of eighth notes and accents (^).

30



Seventh musical staff, bass clef, common time. It continues the melody with a series of eighth notes and a key signature change to two flats.

35



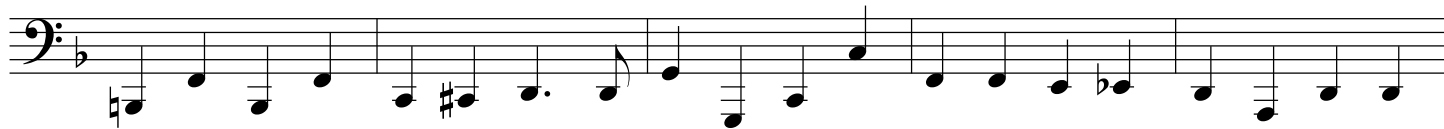
Eighth musical staff, bass clef, common time. It continues the melody with a series of eighth notes.

# Tuba / Marcha-regresso / 2

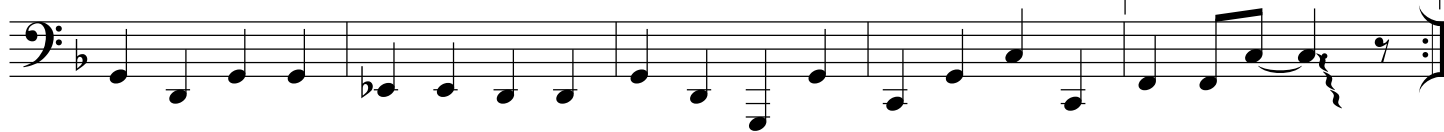
40



45



50



55



58

