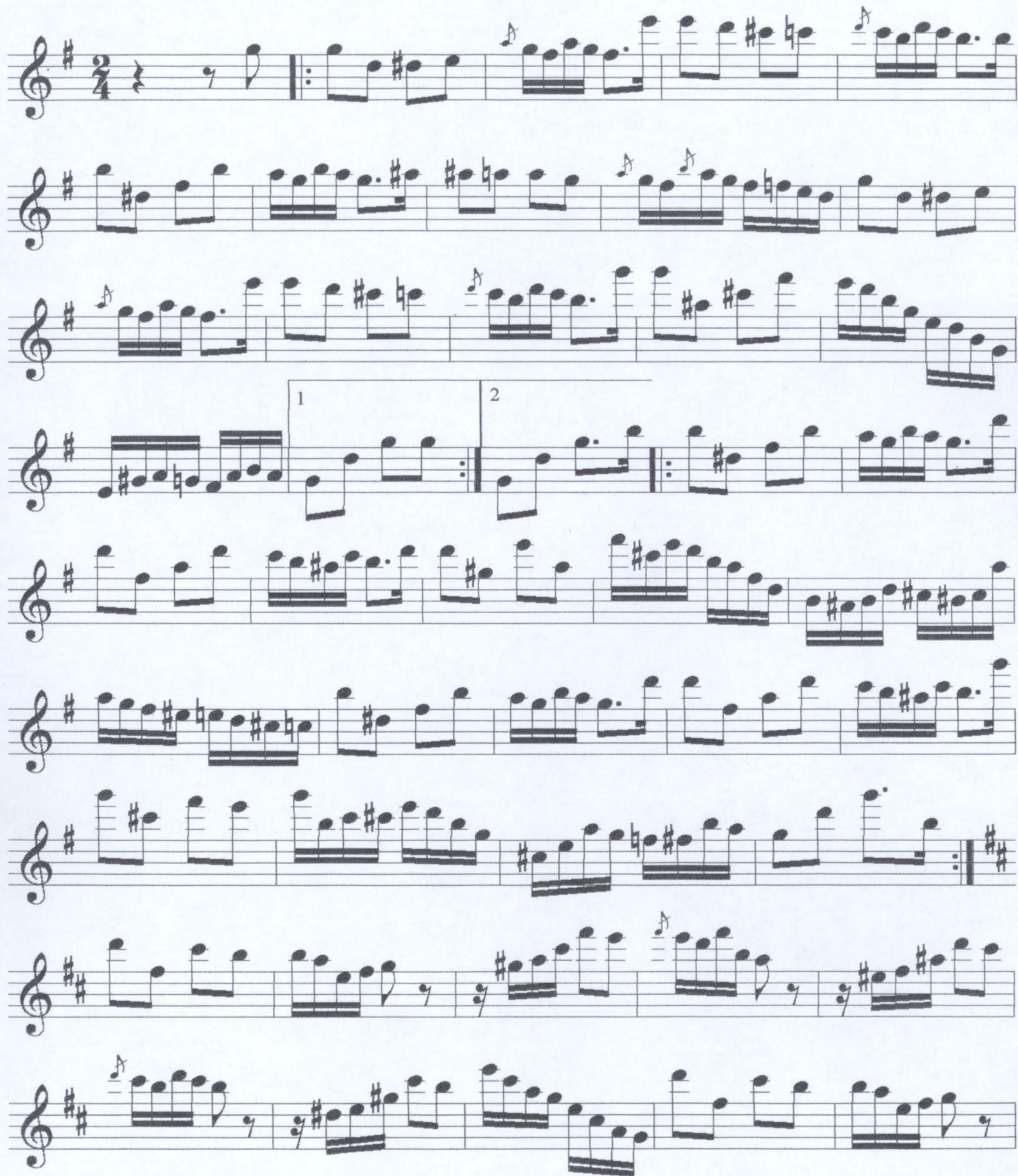


Na sombra da laranjeira

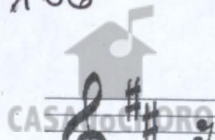
Polka

Galdino Barreto



1 2

106



The image shows two staves of handwritten musical notation. The top staff begins with a treble clef, a key signature of two sharps (F# and C#), and a common time signature (C). It contains a complex melodic line with many beamed notes, some with accidentals, and a final double bar line. The bottom staff also begins with a treble clef and a key signature of two sharps. It contains a simpler melodic line with fewer notes and a final double bar line.