

S A M B A

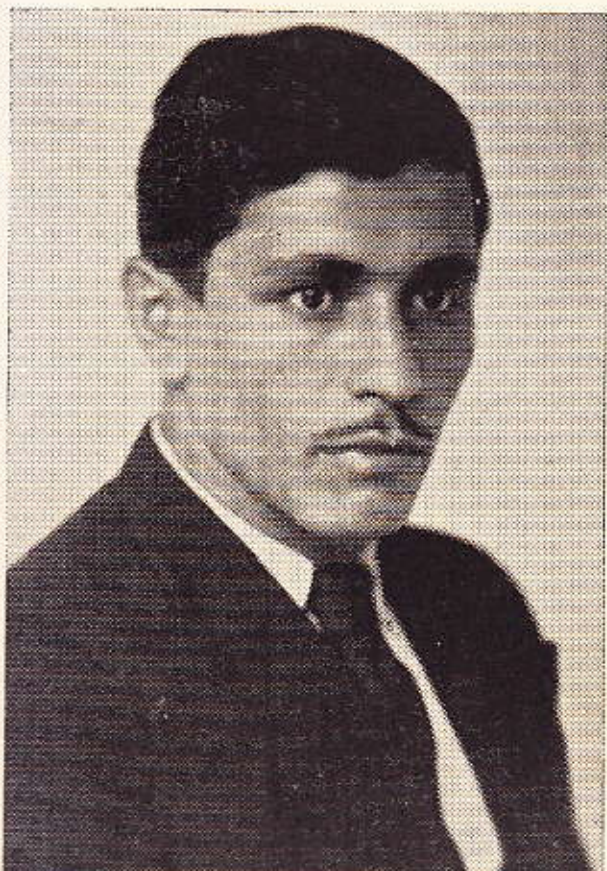
CASA do CHORO

L
I
L
I

OH MEU BEM



ARNALDO AMARAL, gravou em disco



DA PARCERIA

BENEDICTO LACERDA

e KID PEPE

N. 478

Preço 2\$500

"A MELODIA"

Santa Cruz de M...

LILI

Samba

Benedicto Lacerda
e Kid Pepe

PIANO

The first system of the piano accompaniment is written in 2/4 time with a key signature of one flat (B-flat). The right hand features a melodic line with eighth and sixteenth notes, while the left hand provides a steady bass line with quarter notes and rests.

The second system continues the piece and includes two first endings, labeled '1' and '2'. The first ending leads back to the beginning of the system, while the second ending concludes with a 'Bombo' effect, indicated by 'x' marks on the notes.

The third system features a section marked with a double bar line and a '§' symbol. The right hand has a more complex melodic pattern with slurs and ties, and the left hand continues with a rhythmic accompaniment.

The fourth system concludes the piece with two first endings, labeled '1.' and '2.'. The first ending leads to a final cadence, and the second ending provides an alternative conclusion.

Para ir á Introd

D. C.

Só para acabar

CORO

Bis { LILI OH MEU BEM
 TEU AMOR EU TENHO
 É MEU
 E DE MAIS NINGUEM

I

Bis { EU NÃO GOSTO DE JOGAR
 MAS APOSTO NESTE JOGO
 PELO TEU AMOR OH LILI
 PONHO A MÃO NO FOGO

II

Bis { HAVEMOS DE SER FELIZES
 SE JESUS NOS AJUDAR
 TENHO UMA CASINHA NO MORRO
 P'RA NOS DOIS MORAR