

**C**OLEÇÃO

**P**IRILAMPOS

- N.º 1 – Infantil Desejo - Valsa
- N.º 2 – Estrela Peregrina - Valsa
- ★ N.º 3 – Sorriso e Flor - Valsa
- N.º 4 – Vagalume Inquieto - Marchinha
- N.º 5 – Mimososa Luz - Fox-Trot
- N.º 6 – Agelica Aparição - Valsa

Salvador Callia

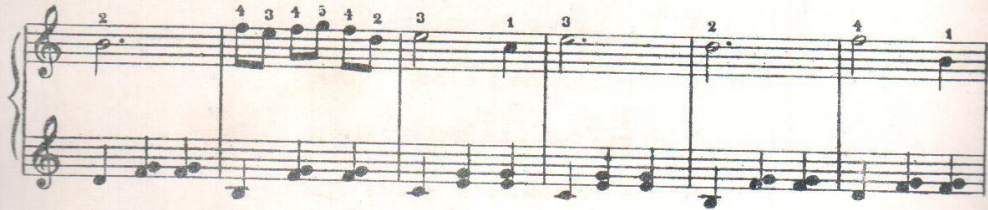


EDITORIAL MANGIONE S. A.  
Sucessora de E. S. MANGIONE

N. de Cat. 10.735

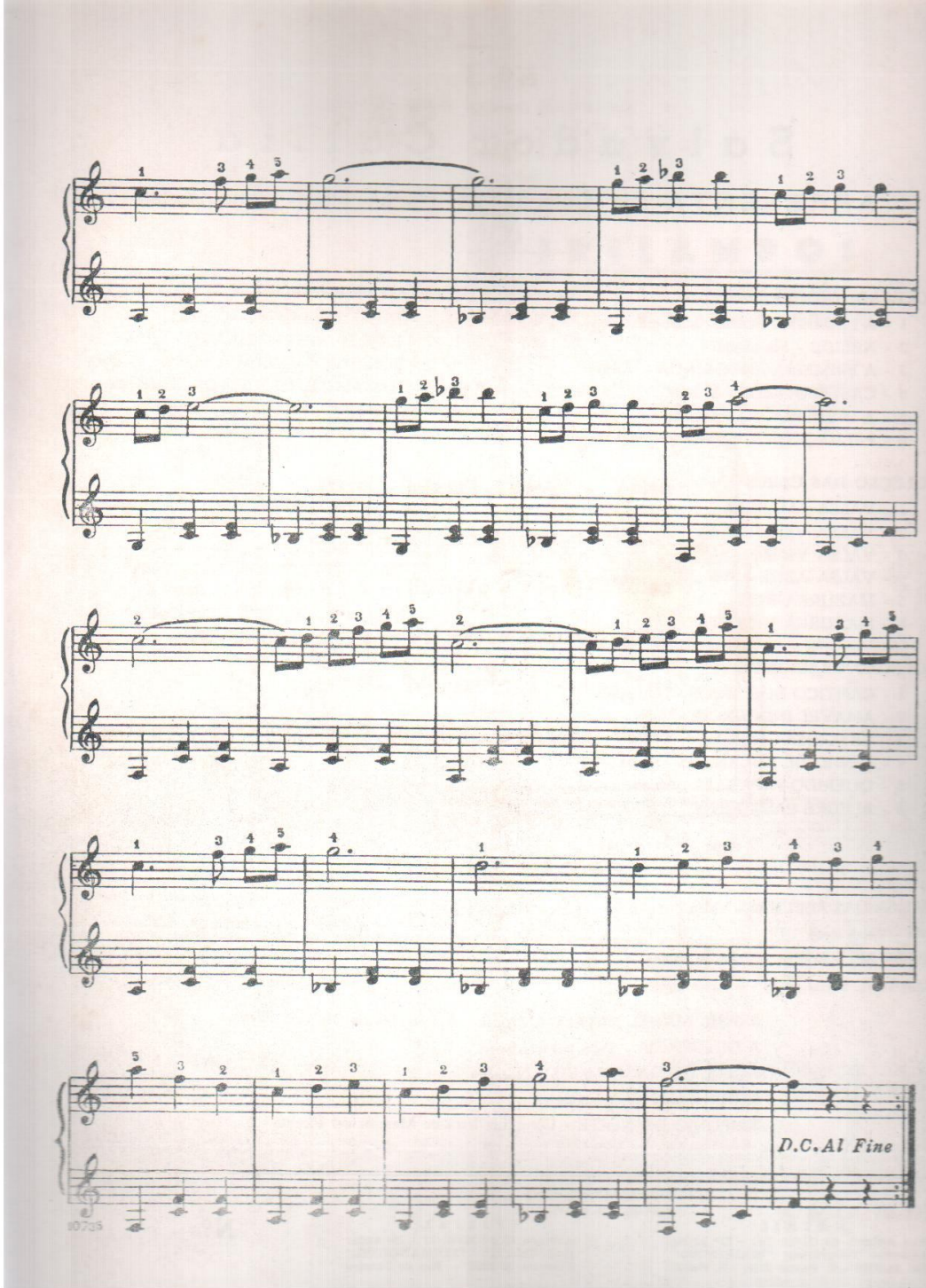
No 3  
*Ao querido menino Franco Piscetta*  
**SORRISO E FLOR**  
Valsa

SALVADOR CALLIA



10735

Control exclusivo para todos os países «E. S. Mangione - Edição "A MELODIA" - S. Paulo - Brasil  
— Registrada na Escola Nacional de Musica do Rio de Janeiro —  
Copyright by E. S. Mangione — Editor — São Paulo — Brasil JUNHO 1950



The image displays a musical score for piano, consisting of five systems of staves. Each system includes a treble clef staff with a melody line and a bass clef staff with a harmonic accompaniment. The score is annotated with various fingerings and articulations:

- System 1:** Treble clef starts with a dotted quarter note (finger 1), followed by eighth notes (finger 3), and a quarter note (finger 4). A slur covers the next two measures. The melody continues with a quarter note (finger 1), an eighth note (finger 2), and a quarter note (finger 3).
- System 2:** Treble clef starts with a quarter note (finger 1), an eighth note (finger 2), and a quarter note (finger 3). A slur covers the next two measures. The melody continues with a quarter note (finger 1), an eighth note (finger 2), and a quarter note (finger 3).
- System 3:** Treble clef starts with a quarter note (finger 2), followed by eighth notes (finger 1), and a quarter note (finger 3). A slur covers the next two measures. The melody continues with a quarter note (finger 1), an eighth note (finger 2), and a quarter note (finger 3).
- System 4:** Treble clef starts with a quarter note (finger 1), followed by eighth notes (finger 3), and a quarter note (finger 4). A slur covers the next two measures. The melody continues with a quarter note (finger 1), an eighth note (finger 2), and a quarter note (finger 3).
- System 5:** Treble clef starts with a quarter note (finger 5), followed by eighth notes (finger 3), and a quarter note (finger 2). A slur covers the next two measures. The melody continues with a quarter note (finger 1), an eighth note (finger 2), and a quarter note (finger 3).

The score concludes with the instruction *D.C. Al Fine* in the bottom right corner of the final system. The number 10735 is printed in the bottom left corner of the page.