

# Flor de Pitanga

Choro Canção

Samuca do Acordeon

Elias Barboza

♩ = 50

The musical score for "Flor de Pitanga" is written in treble clef with a key signature of one sharp (F#) and a 2/4 time signature. The tempo is marked as ♩ = 50. The score consists of nine staves of music, each with guitar chords indicated above the notes. The chords are: G7M, C7(9), Am, D7, G, E7(13), A7(13), D7, G7M, B, C#m, F#7, B7, E7, A7, D7, G7M, C7(9), Am, B7, Em7(11), Em, Dm, G7, C, Cm6, G, F7, E7, Am7(9), Bm7(9), Cm7(9), D7(#9), G7M, and B7. The piece concludes with a "Fine" marking.

Em Em7M Em7 Em6 Am7(9)

∕



Am D7 G Bm Bm7(b5) E7



C#m7(b5) Cm7M Bm7(11) Em7



B7M Em6 B7M B7

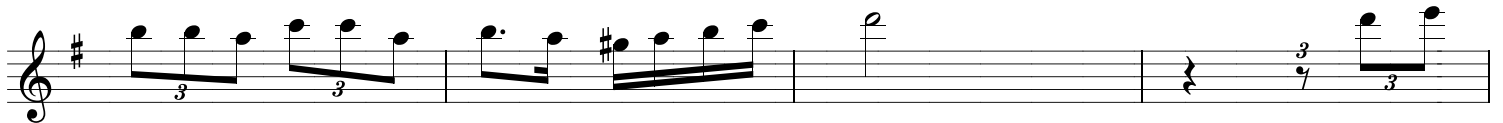


Em Em7M Em7 Em6 Am7(9)

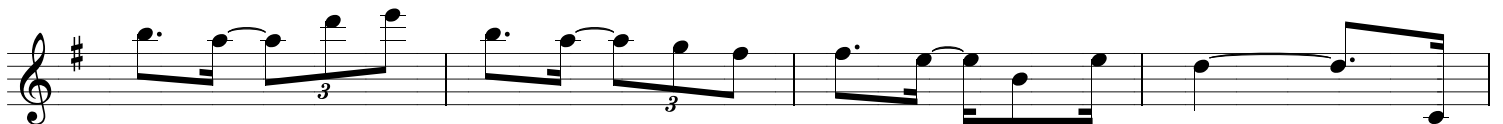
∕



Am D7 G Bm Bm7(b5) E7



C#m7(b5) Cm7M Bm7(11) Em7



C B7 Em Eb7 D7



*D.S. al Fine*