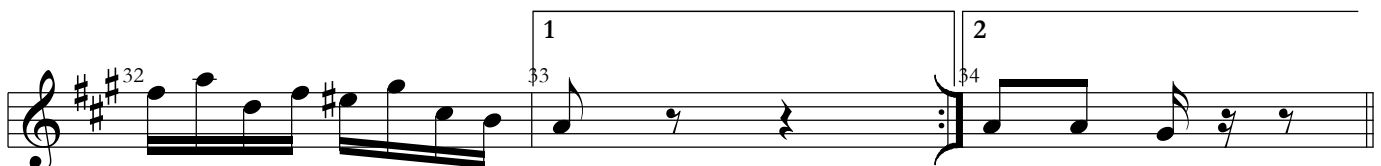
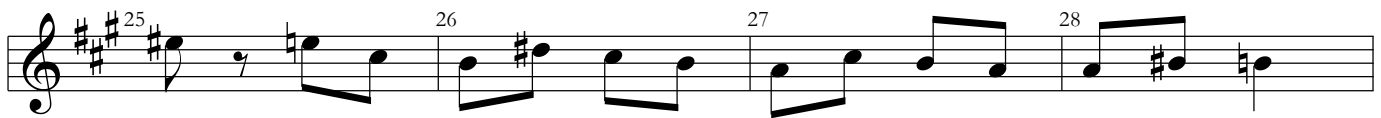
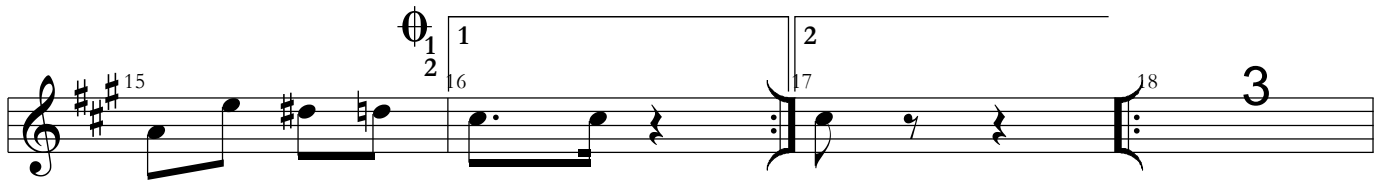
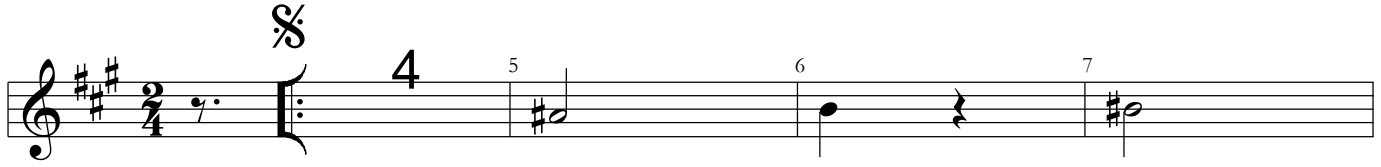




# Paciente (Polca) / Sax. Alto 2

Pixinguinha

arranjo: Pedro Aragão  
Paulo Aragão



$\Phi_1$

35 36 37 38

39 40 41 42 43

44 45 46 47

48 49 50 51

52 53 54 55 56

1 2

Ao  $\frac{S}{e} \Phi_2$

$\Phi_2$

57