

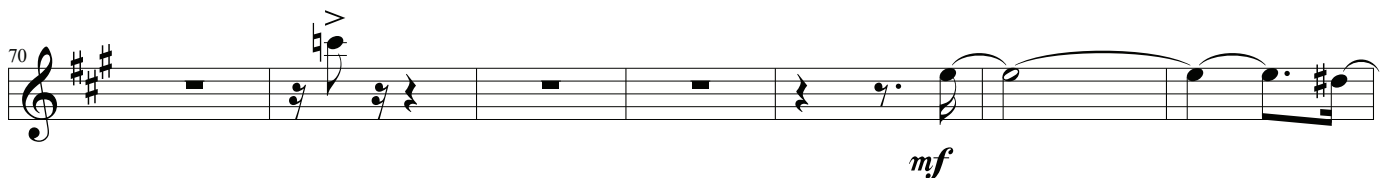
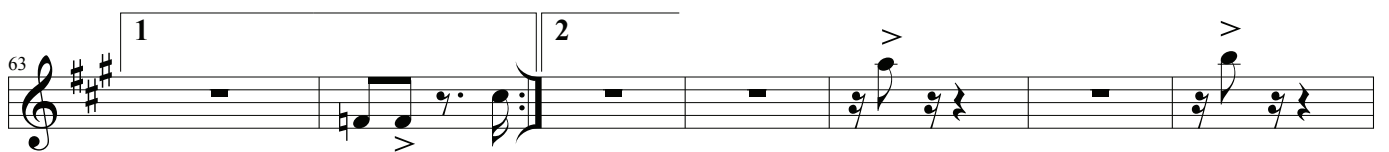
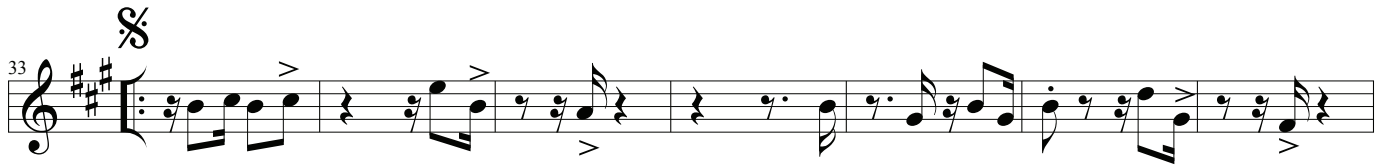
Gafieira suburbana

samba

Cristovão Bastos

arranjo: Cristovão Bastos

sax tenor



77 Musical staff 77-83. Treble clef, key signature of three sharps (F#, C#, G#). Measure 77: quarter note G#4, quarter note A4. Measure 78: eighth notes G#4, A4, B4, C5, quarter note B4. Measure 79: quarter note A4, quarter note G#4, quarter rest. Measure 80: quarter note G#4, quarter note F#4, quarter note E4. Measure 81: quarter note D4, quarter note C4, quarter note B3. Measure 82: quarter note A3, quarter note G3, quarter note F3. Measure 83: quarter note E3, quarter note D3, quarter note C3. Dynamics: *f* (forte) with a hairpin crescendo starting at measure 81.

84 Musical staff 84-90. Treble clef, key signature of three sharps. Measure 84: quarter rest, quarter note G#4. Measure 85: quarter rest, quarter note A4. Measure 86: quarter rest, quarter note B4. Measure 87: quarter rest, quarter note C5. Measure 88: quarter rest, quarter note B4. Measure 89: quarter rest, quarter note A4. Measure 90: quarter note G#4, quarter note F#4, quarter note E4. Dynamics: *p* (piano) starting at measure 84.

91 Musical staff 91-98. Treble clef, key signature of three sharps. Measure 91: quarter note G#4, quarter note A4, quarter note B4, quarter note C5. Measure 92: quarter note B4, quarter note A4, quarter note G#4, quarter note F#4. Measure 93: quarter note E4, quarter note D4, quarter note C4, quarter note B3. Measure 94: quarter note A3, quarter note G3, quarter note F3, quarter note E3. Measure 95: quarter note D3, quarter note C3, quarter note B2, quarter note A2. Measure 96: quarter note G2, quarter note F2, quarter note E2, quarter note D2. Measure 97: quarter note C2, quarter note B1, quarter note A1, quarter note G1. Measure 98: quarter note F1, quarter note E1, quarter note D1, quarter note C1. Dynamics: *mf* (mezzo-forte) at measure 91, *f* (forte) at measure 95. Text: *Ao S (direto à casa 2)* at measure 98.

99 Musical staff 99-105. Treble clef, key signature of three sharps. Measure 99: eighth notes G#4, A4, B4, C5, quarter note B4. Measure 100: eighth notes A4, G#4, F#4, E4, quarter note D4. Measure 101: eighth notes C4, B3, A3, G3, quarter note F3. Measure 102: eighth notes E3, D3, C3, B2, quarter note A2. Measure 103: eighth notes G2, F2, E2, D2, quarter note C2. Measure 104: eighth notes B1, A1, G1, F1, quarter note E1. Measure 105: eighth notes D1, C1, B0, A0, quarter note G0. Dynamics: *f* (forte) throughout.

106 Musical staff 106-112. Treble clef, key signature of three sharps. Measure 106: eighth notes G#4, A4, B4, C5, quarter note B4. Measure 107: eighth notes A4, G#4, F#4, E4, quarter note D4. Measure 108: eighth notes C4, B3, A3, G3, quarter note F3. Measure 109: eighth notes E3, D3, C3, B2, quarter note A2. Measure 110: eighth notes G2, F2, E2, D2, quarter note C2. Measure 111: eighth notes B1, A1, G1, F1, quarter note E1. Measure 112: eighth notes D1, C1, B0, A0, quarter note G0. Dynamics: *f* (forte) throughout.

113 Musical staff 113-119. Treble clef, key signature of three sharps. Measure 113: eighth notes G#4, A4, B4, C5, quarter note B4. Measure 114: eighth notes A4, G#4, F#4, E4, quarter note D4. Measure 115: eighth notes C4, B3, A3, G3, quarter note F3. Measure 116: eighth notes E3, D3, C3, B2, quarter note A2. Measure 117: eighth notes G2, F2, E2, D2, quarter note C2. Measure 118: eighth notes B1, A1, G1, F1, quarter note E1. Measure 119: eighth notes D1, C1, B0, A0, quarter note G0. Dynamics: *f* (forte) throughout.

120 Musical staff 120-127. Treble clef, key signature of three sharps. Measure 120: eighth notes G#4, A4, B4, C5, quarter note B4. Measure 121: eighth notes A4, G#4, F#4, E4, quarter note D4. Measure 122: eighth notes C4, B3, A3, G3, quarter note F3. Measure 123: eighth notes E3, D3, C3, B2, quarter note A2. Measure 124: eighth notes G2, F2, E2, D2, quarter note C2. Measure 125: eighth notes B1, A1, G1, F1, quarter note E1. Measure 126: eighth notes D1, C1, B0, A0, quarter note G0. Measure 127: eighth notes G#4, A4, B4, C5, quarter note B4. Dynamics: *f* (forte) throughout.

128 Musical staff 128-134. Treble clef, key signature of three sharps. Measure 128: eighth notes G#4, A4, B4, C5, quarter note B4. Measure 129: eighth notes A4, G#4, F#4, E4, quarter note D4. Measure 130: eighth notes C4, B3, A3, G3, quarter note F3. Measure 131: eighth notes E3, D3, C3, B2, quarter note A2. Measure 132: eighth notes G2, F2, E2, D2, quarter note C2. Measure 133: eighth notes B1, A1, G1, F1, quarter note E1. Measure 134: eighth notes D1, C1, B0, A0, quarter note G0. Dynamics: *f* (forte) throughout.

135 Musical staff 135-140. Treble clef, key signature of three sharps. Measure 135: quarter note G#4, quarter note A4, quarter note B4, quarter note C5. Measure 136: quarter note B4, quarter note A4, quarter note G#4, quarter note F#4. Measure 137: quarter note E4, quarter note D4, quarter note C4, quarter note B3. Measure 138: quarter note A3, quarter note G3, quarter note F3, quarter note E3. Measure 139: quarter note D3, quarter note C3, quarter note B2, quarter note A2. Measure 140: quarter note G2, quarter note F2, quarter note E2, quarter note D2. Dynamics: *p* (piano) at measure 135, *pp* (pianissimo) at measure 140. A fermata is placed over the first measure.