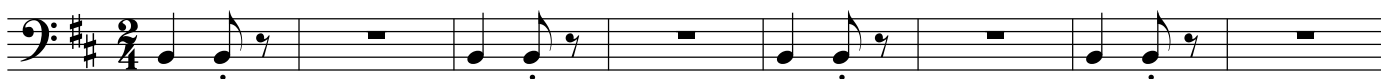


# Pedaços

samba

Francis Hime e P.C. Pinheiro  
 Arr: M. Carrilho / adapt. P. Aragão

Tuba



9



16



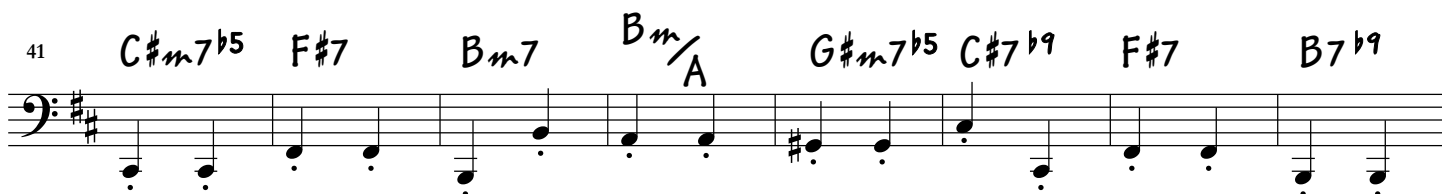
24



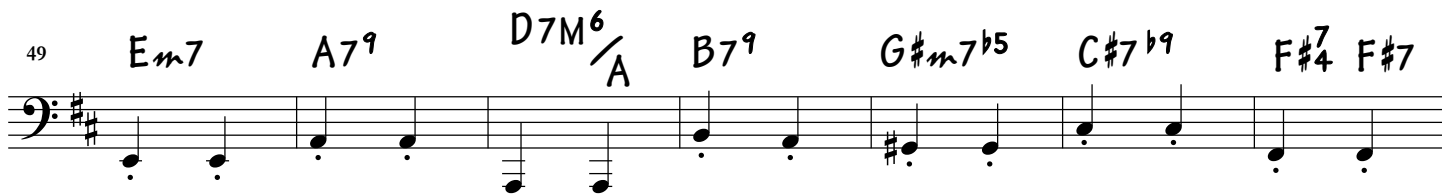
33



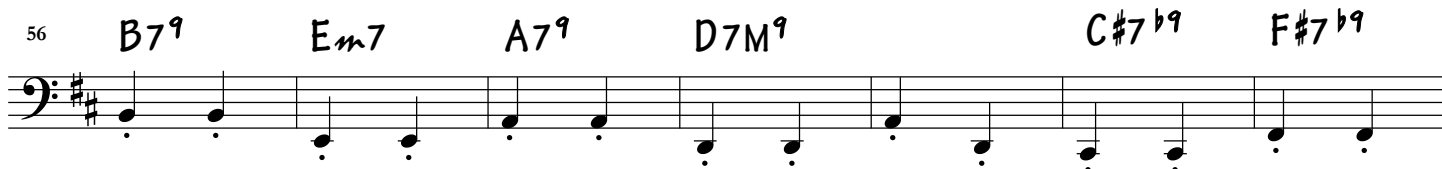
41



49



56



Tuba / Pedacos / 2

63  $B_m7$   $B_m/A$   $G\#^0$   $C\#7\#9$   $F\#4$   $F\#7\flat9$   $C\#m7\flat5$

70  $F\#7$   $B_m7^9$   $B_m6$   $E_m7$   $A7^9$   $D7M^9$   $B7\flat9$

77  $C\#m7\flat5$   $F\#7$   $B_m7$   $B_m/A$   $E_m6/G$   $F\#7\flat13$   $B_m^{add9}$   $G7$

85  $C_m7$   $F_m6/C$   $C_m7$   $F_m6/C$   $D/C$   $C_m6$   $D/C$   $C_m6$

93  $D\flat/C$   $D7/A$   $A\flat7\flat5$   $G4\flat9$   $G7$

101  $A\flat6/C$   $B^0$   $C_m7$   $C_m6$   $F_m7$   $B\flat7^9$   $E\flat7M$   $C7\flat9$

109  $D_m7\flat5$   $G7$   $C_m7$   $C_m/B\flat$   $A_m7\flat5$   $D7\flat9$   $G7$   $C7\flat9$

117  $F_m7$   $B\flat7^9$   $E\flat6/B\flat$   $C7^9$   $A_m7\flat5$   $D7\flat9$   $G4^7$   $G7$   $C7^9$

125  $F_m7$   $B\flat7^9$   $E\flat7M^9$   $D7\flat9$   $G7\flat9$   $C_m7$

Tuba / Pedacos / 3

132  $C_m/B_b$   $A^0$   $D7^{\#9}$   $G^7_4$   $G7^{\flat 9}$   $D_m7^{\flat 5}$   $G7$

139  $C_m7^9$   $C_m6$   $F_m7$   $B_b7^9$   $E_b7M^9$   $C7^{\flat 9}$   $D_m7^{\flat 5}$   $G7$

147  $C_m7$   $C_m/B_b$   $F_m6/A_b$   $G7^{\flat 13}$   $C_m7$   $C_m/B_b$   $F_m6/A_b$   $G7$

155

163

172

181  $D7/A$   $A_b7^{\flat 5}$   $G^7_4^{\flat 9}$   $G7$   $A_b6$

189  $C_m7^9$