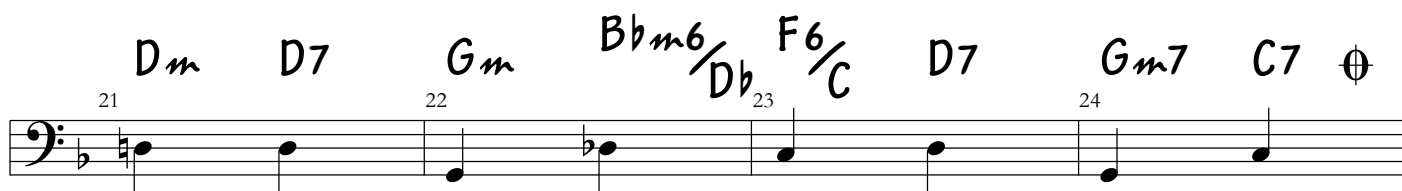
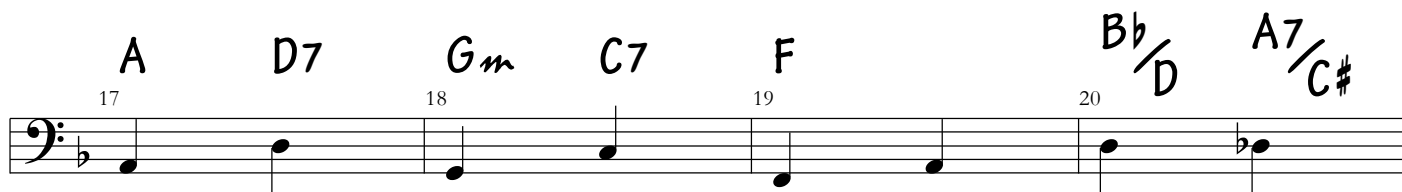
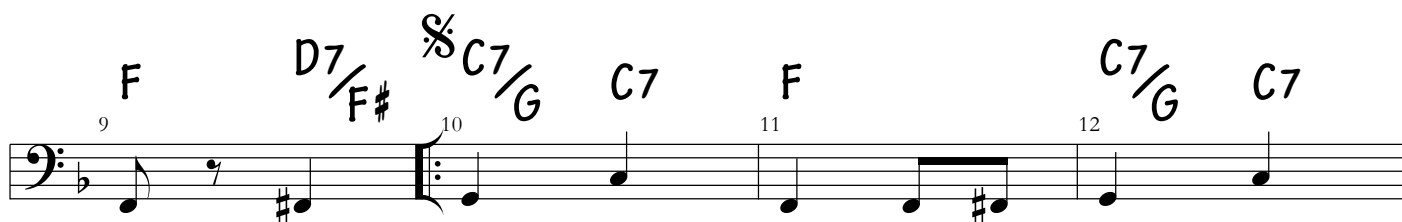
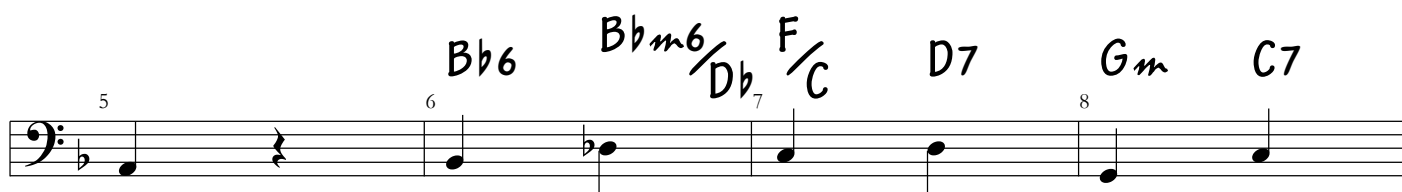




Maxixe das flores / Baixo

Altamiro Carrilho



1 2

F D7/F# F Dm A/C#

25 26 27 28

D/C Gm/Bb Gm Dm/A

29 30 31 32

E7/G# E7 A7 Dm A7/C#

33 34 35 36

D/C Gm/Bb Gm Em7b5

37 38 39

Dm/F Dm Em7b5 A7 Dm

40 41 42

⊕

F Bb6 F/A Gm/Bb

43 44 45 46

D7/A Bb6 Bbm/Db F/C D7 Gm C7 F

47 48 49 50 51

Ao S e ⊕