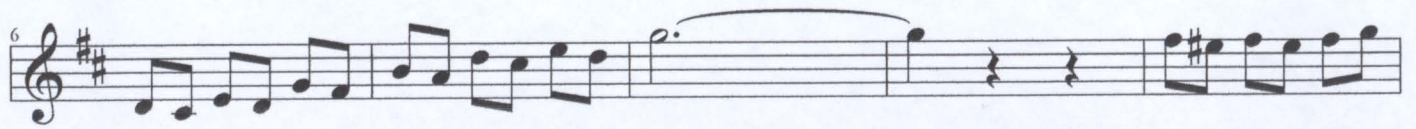
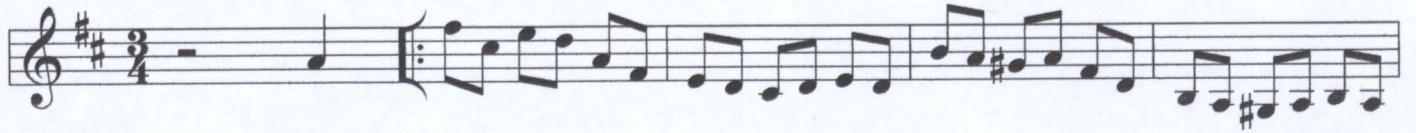


# (079) Tormentos do Coração

valsas

Aristides Borges



36



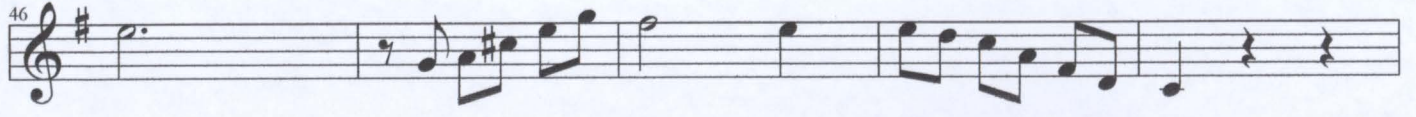
Staff 36-40: Treble clef, key signature of one sharp (F#). Measures 36-40 contain a melodic line with eighth and quarter notes.

41



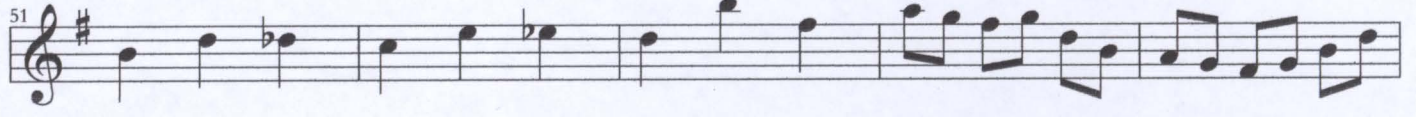
Staff 41-45: Treble clef, key signature of one sharp (F#). Measures 41-45 continue the melodic line with some rests and eighth notes.

46



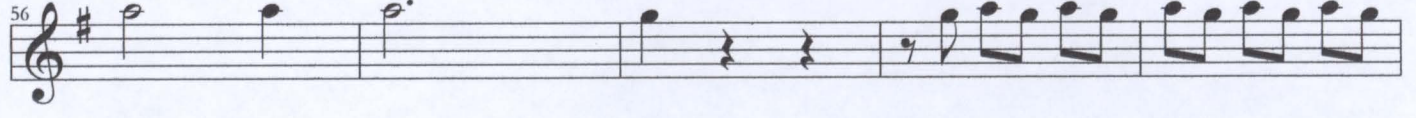
Staff 46-50: Treble clef, key signature of one sharp (F#). Measures 46-50 continue the melodic line, featuring a quarter rest in measure 47.

51



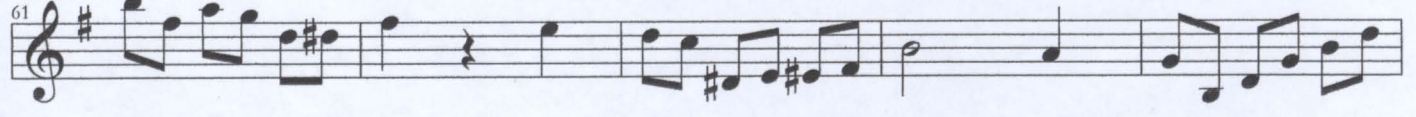
Staff 51-55: Treble clef, key signature of one sharp (F#). Measures 51-55 continue the melodic line with eighth and quarter notes.

56



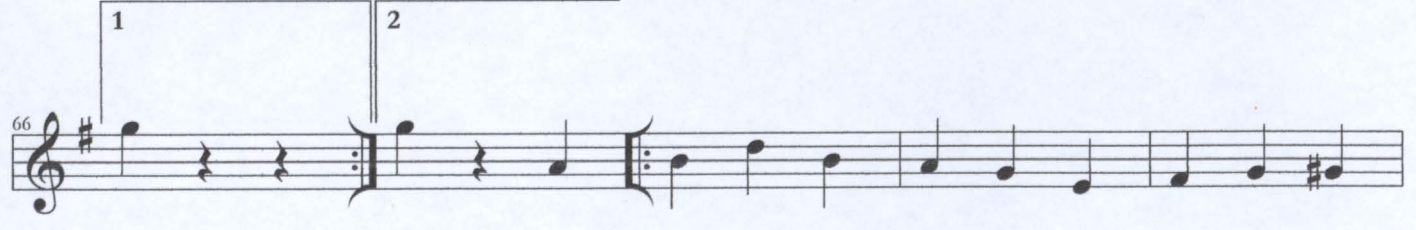
Staff 56-60: Treble clef, key signature of one sharp (F#). Measures 56-60 continue the melodic line with quarter notes and rests.

61



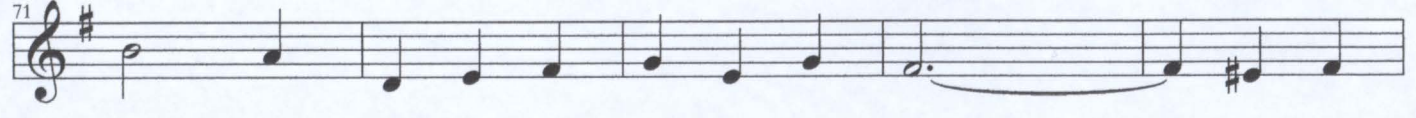
Staff 61-65: Treble clef, key signature of one sharp (F#). Measures 61-65 continue the melodic line with eighth and quarter notes.

66



Staff 66-70: Treble clef, key signature of one sharp (F#). Measures 66-70 feature a first ending bracket over measures 66-67 and a second ending bracket over measures 68-70.

71



Staff 71-75: Treble clef, key signature of one sharp (F#). Measures 71-75 continue the melodic line with quarter notes and a slur over the final measure.



76

81

86

91

96

101