

CASA

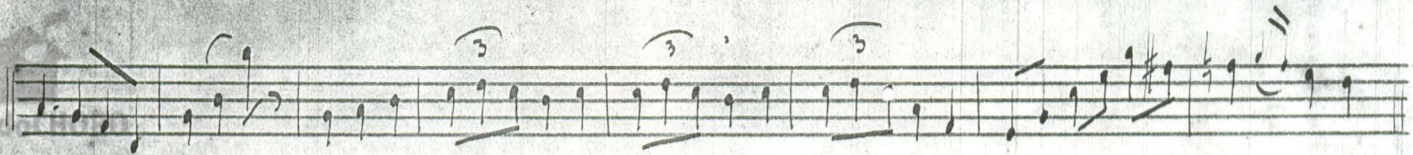


# "Helena"

(de Mario Hvaric)

The image shows a handwritten musical score for a piece titled "Helena" by Mario Hvaric. The score is written on aged, slightly torn paper and consists of 12 staves of music. The notation includes various note values, rests, and dynamic markings. A red circular stamp in the top left corner reads "ARQUIVO ANNA & M. CARRILHO MUSICAL". The word "CASA" is visible in the top left corner. The score begins with a treble clef and a 3/4 time signature. The music is written in a key with one sharp (F#). The score includes several measures with triplets, indicated by a '3' over the notes. The handwriting is clear and legible.





*Copia de Arnaldo Corrêa*