

Rauchoeira

1º Tromb. Sib

CASAdoCHORO

Exercício Arcaico

Handwritten musical score for 1st Trombone in Sib, titled "Exercício Arcaico". The score is written on ten staves. The first staff shows a treble clef, a key signature of one flat (Bb), and a 3/4 time signature. The music consists of a series of notes and rests, with some slurs and accents. The notation includes various clefs (treble, alto, bass), key signatures (Bb, B), and time signatures (3/4). The piece concludes with a double bar line and a final flourish.



Rachera

3º Teus

CASA do CHORO

Curico Arany

Handwritten musical score for 'Curico Arany' on ten staves. The score is written in treble clef with a 3/4 time signature. It begins with a key signature of one sharp (F#) and a common time signature. The notation includes various rhythmic values such as quarter notes, eighth notes, and rests, along with dynamic markings like 'p' (piano) and 'f' (forte). The piece concludes with a double bar line and a final key signature change to one flat (Bb). A signature is present at the bottom right of the page.



Raubeira

CASAdoCHORO

João Guimarães

Sevicio Arany

Handwritten musical score for guitar, featuring treble clef, 3/4 time signature, and a key signature of one sharp (F#). The score consists of 11 staves of music, including various rhythmic values (quarter notes, eighth notes, sixteenth notes) and rests. The notation includes dynamic markings such as *f* (forte) and *ff* (fortissimo), and articulation marks like accents and slurs. The piece concludes with a double bar line and a sharp sign.



Raucheira

João Humbert

CASA do CHORO

Curico Araujo

Handwritten musical score for guitar, consisting of seven staves. The notation includes treble and bass clefs, a 3/4 time signature, and various musical notes and rests. A signature 'JH' is present at the bottom right of the seventh staff.



Paukelein

3<sup>o</sup> Trombe sit

CASA do CHORO

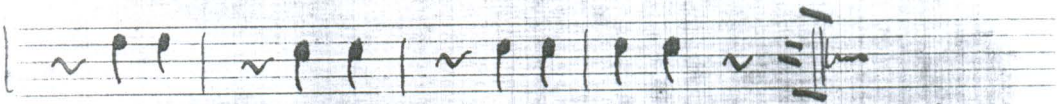
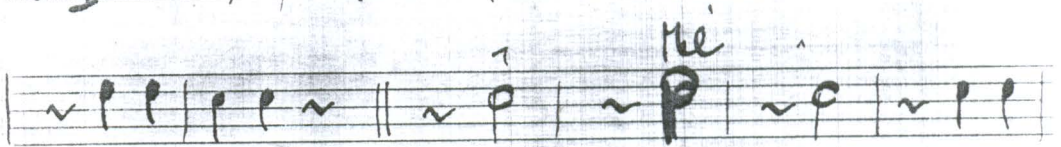
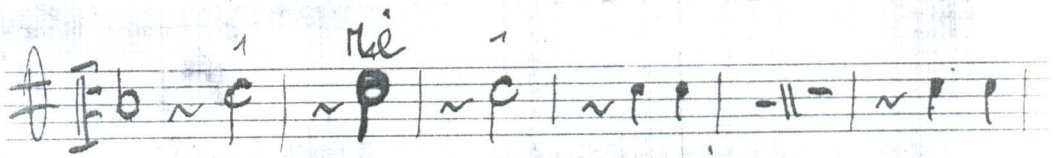
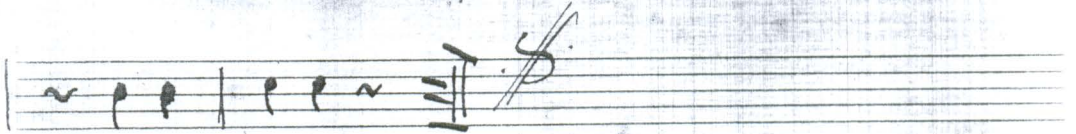
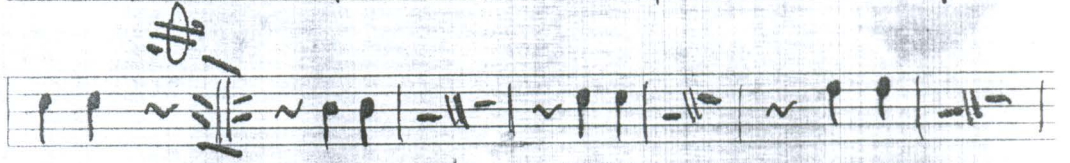
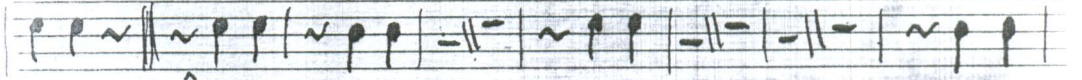
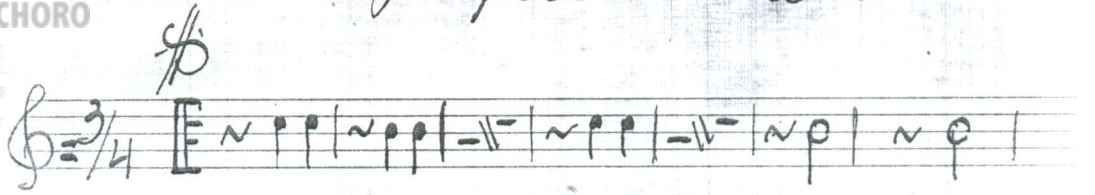
Curico Praup

Handwritten musical score for Paukelein, 3<sup>o</sup> Trombe sit. The score is written on ten staves. The first staff shows a treble clef, a key signature of one flat (B-flat), and a 2/4 time signature. The music consists of a series of quarter notes and rests. The second staff continues the melody with a key signature change to two flats (B-flat and E-flat). The third staff continues with quarter notes. The fourth staff shows a key signature change to one flat (B-flat) and a 2/4 time signature. The fifth staff continues with quarter notes. The sixth staff shows a key signature change to two flats (B-flat and E-flat) and a 2/4 time signature. The seventh staff continues with quarter notes. The eighth staff shows a key signature change to one flat (B-flat) and a 2/4 time signature. The ninth staff continues with quarter notes. The tenth staff shows a key signature change to two flats (B-flat and E-flat) and a 2/4 time signature. The score ends with a double bar line and a key signature change to one flat (B-flat).



# Enrico Araujo-Ranheira 1º Teuís

CASAdoCHORO



de S.



CASA do CHORO

Curico

Handwritten musical score for 'Curico'. The score is written on seven staves. The first staff begins with a treble clef, a key signature of one sharp (F#), and a 3/4 time signature. The music consists of rhythmic patterns of eighth and sixteenth notes, often beamed together. There are several repeat signs (double bar lines with dots) and dynamic markings throughout the piece. The notation is dense and characteristic of traditional Brazilian choro music.



Rauchera

Bombino do'

CASAdoCHORO

Curico Arape

The image shows a handwritten musical score for a piece titled "Curico Arape" by Bombino do'. The score is written on ten staves, organized into five systems of two staves each. The first system begins with a treble clef, a key signature of one flat (Bb), and a 3/4 time signature. The music is written in a style characteristic of Brazilian choro, featuring complex rhythmic patterns and dense chordal textures. The notation includes various note values, rests, and dynamic markings such as "f" (forte) and "p" (piano). The score concludes with a double bar line and a final cadence symbol.

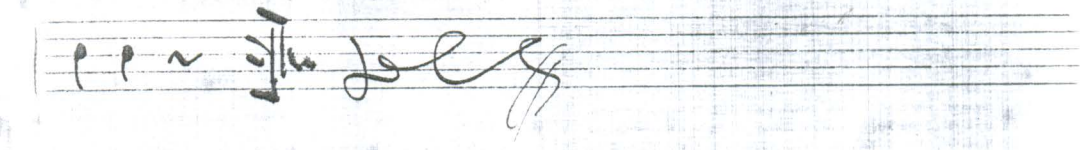
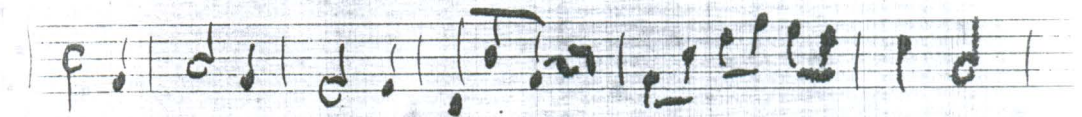
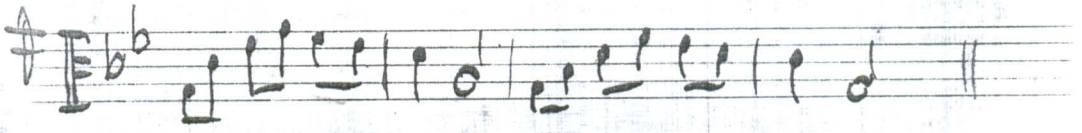
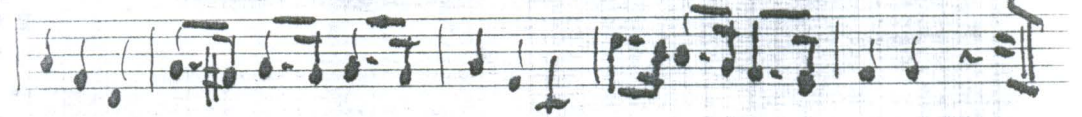
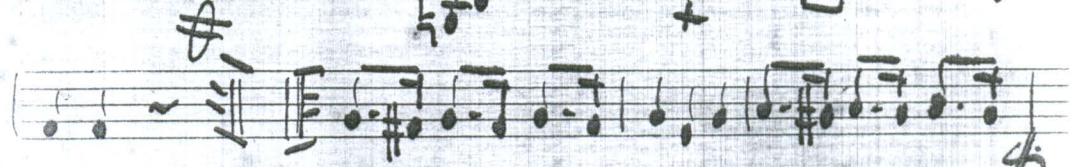
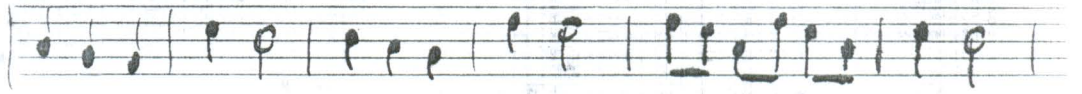
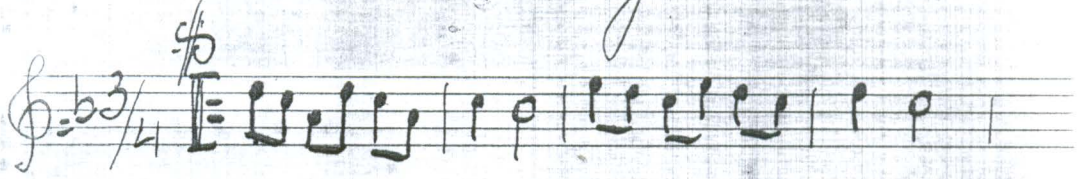


CASA do CHORO

# Rancheira

Erico Kraus

2º Clarino





# Rancheira

CB. sil

## Curico Aramp



Clarinete

CASA do CHORO

2

Panheira

Enrico