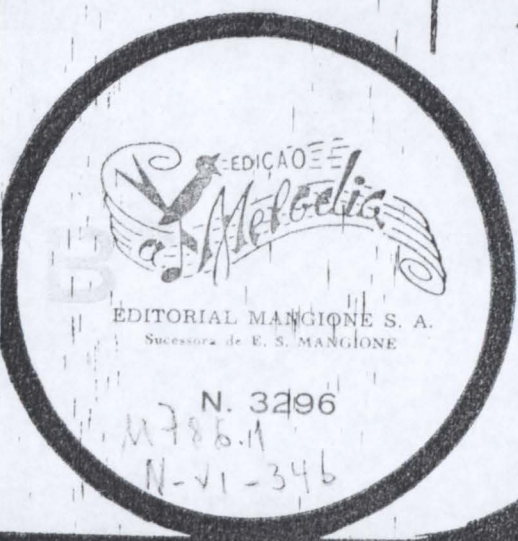
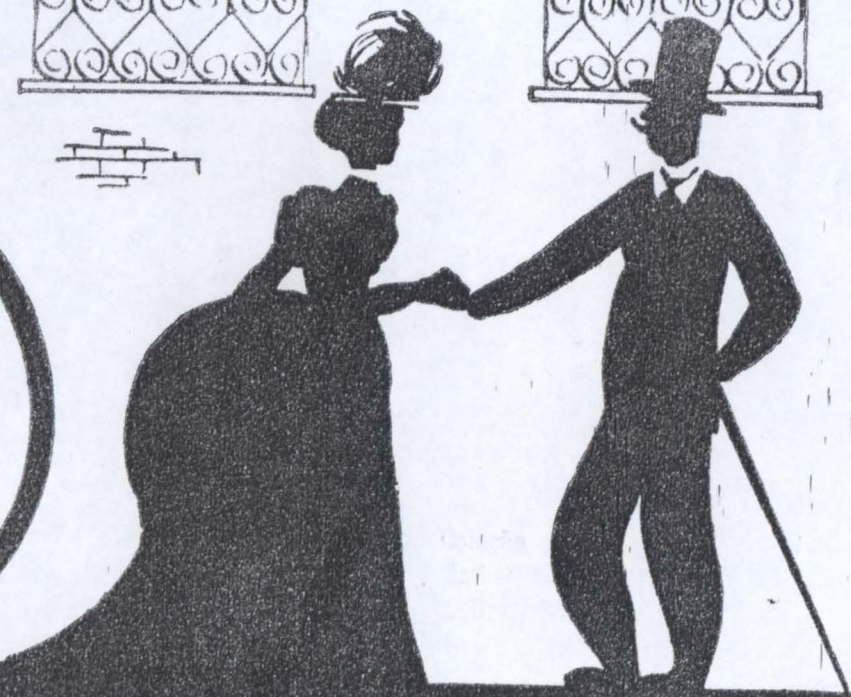
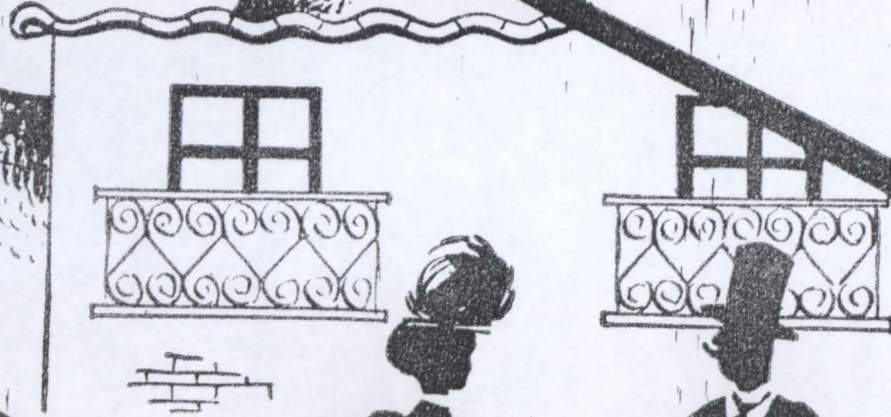
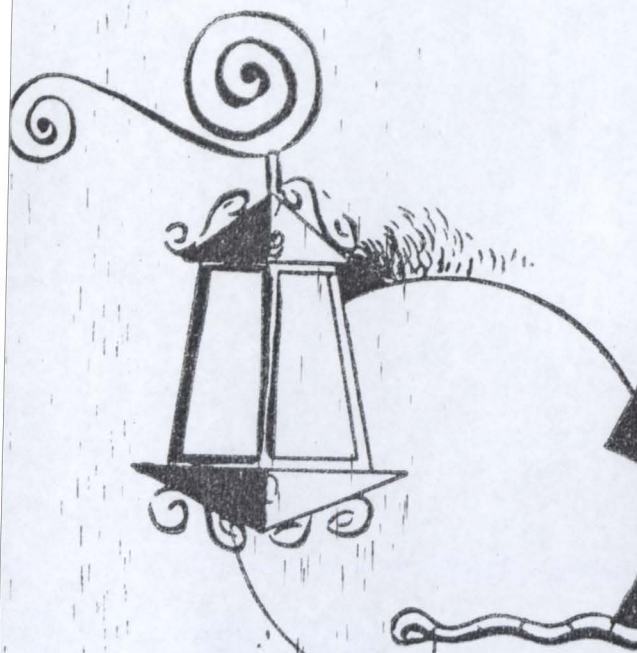
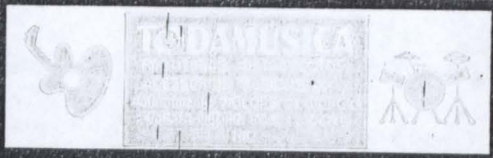


# Ernesto Nazareth



N. 3296  
M786.11  
N-21-346

BERCO



# ELEGANTISSIMA

4 min

## VALSA CAPRICHIO

Dedicada á memoria  
de  
De Larrigue de Faro

ERNESTO NAZARETH

PIANO

Moderato

mf scintill.

pp scintill. rit.

con fuoco

rit.

VALSA

con incerteza a tempo e animato

Copyright Ernesto Nazareth Abril de 1926

© Copyright 1945 by EDITORIAL MANGIONE S. A., Sucessora de E. S. Mangione,  
São Paulo, Rio de Janeiro, Brasil. -  
Todos os direitos autorais reservados para todos os paises. - All rights reserved. -

525.387-1379-d

Deste compasso passa a 2ª parte

Este sendo final, também serve p.o Trio

com brilho

sec.

sec.

FIM

ff

cresc.

ff rit.

1

2

cresc. poco a poco

ritard.

DAL

AL

TRIO

8... subito *f* legato *cresc* *rit.* *delicato*

8...:

8... *f* *pp* *sa-acima*.....

8... *ritar.* *f e deciso* *sa-acima*..... *loco* *bassa*

8... *f cresc.* *ff* *bassa*

8... *dim.* *rit.* *a tempo* *Dal 3/4 Al Fine*