

Esta Chumbado! Sango de E. Marath Violino A. 343

1^o ad lib.

2^o ad libitum *Fino*

Rio, 20-12-915

Ticoma Tucuman

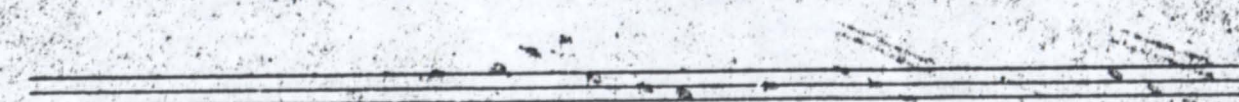
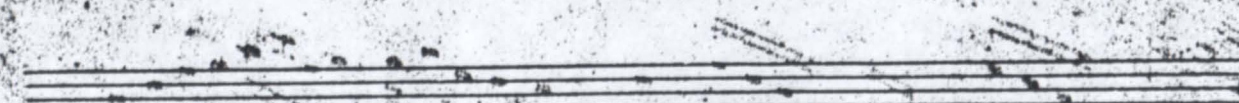
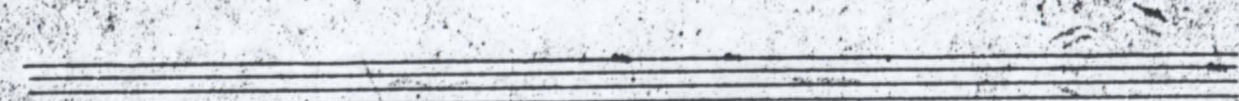
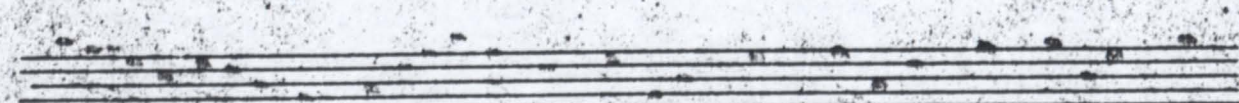
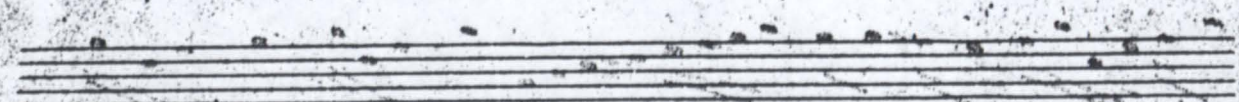
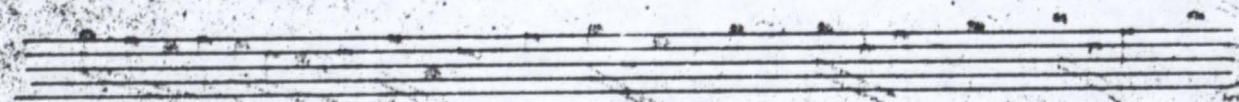
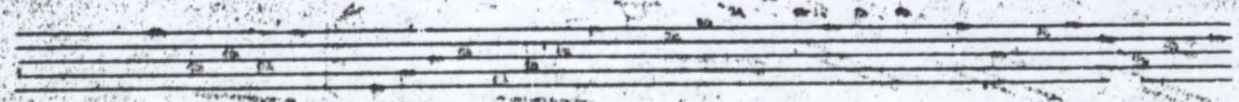
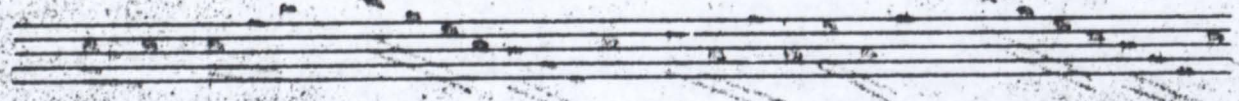
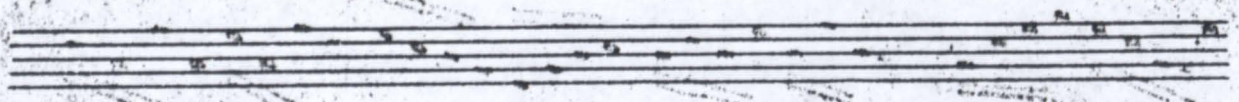
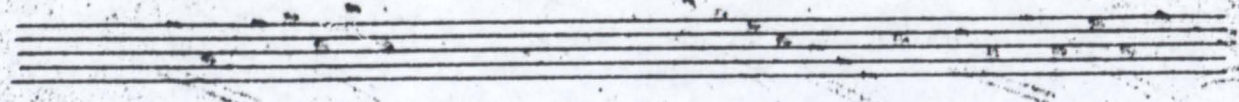
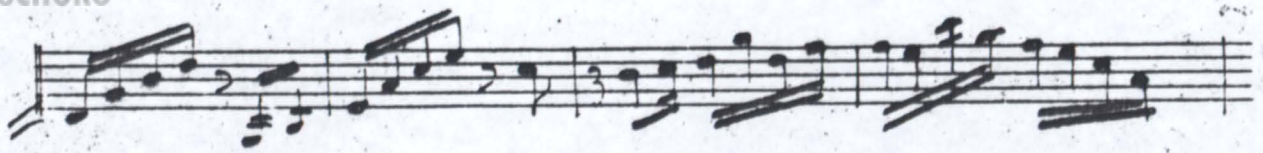
Estacumbado

Clarinete sib.

f

Fin

Trio



Vistoria sib.

Esta chumbado.

A handwritten musical score for a piece titled "Esta chumbado." The score is written on ten staves. The first staff is a treble clef with a key signature of two sharps (F# and C#) and a 3/4 time signature. The melody begins with a treble clef and a key signature of two sharps. The second staff is a bass clef. The third and fourth staves are bass clefs. The fifth and sixth staves are treble clefs. The seventh staff is a bass clef. The eighth and ninth staves are treble clefs. The tenth staff is a bass clef. The music features a mix of eighth and sixteenth notes, with some triplets and rests. There are some handwritten annotations and corrections throughout the score, including a large scribble at the beginning of the first staff and some markings above the notes in the fourth and fifth staves.

Trombone.

Está chumbado

A handwritten musical score for Trombone, titled "Está chumbado". The score is written on ten staves. The first staff shows the title and the instrument name. The music is in 3/4 time and features a melodic line with various rhythmic patterns, including eighth and sixteenth notes, and rests. The notation includes accidentals (sharps and naturals) and dynamic markings such as accents and slurs. The piece concludes with a double bar line and the word "Fin". At the bottom right, there is a handwritten "DC-f" marking.

Esta Chumbao! Fuga de E. Mazzuchini! 3/4 Violino B.

The first staff of music begins with a treble clef, a key signature of one sharp (F#), and a 3/4 time signature. It contains several measures of music, including a double bar line with a repeat sign and a fermata over the final note.

The second staff continues the melody with similar rhythmic patterns and includes a double bar line with a repeat sign and a fermata.

The third staff features more complex rhythmic figures and includes a double bar line with a repeat sign and a fermata.

The fourth staff continues the piece with various note values and rests, ending with a double bar line and a fermata.

The fifth staff shows a continuation of the melodic line with some rests and a double bar line with a fermata.

The sixth staff begins with a double bar line and the word 'Fin' written above the staff.

The seventh staff starts with the word 'Fin' above the staff and contains several measures of music.

The eighth staff continues the musical notation with various note values and rests.

The ninth staff concludes the piece with a double bar line, a fermata, and the instruction 'D.C. tutto' written below the staff.

Esta chumbão - Faugstad & Hovareth. 3/4 Violoncello.

Esta Chumbado = *Sings de E. Nazareth - 343* C. Basso

Handwritten musical score for 'Esta Chumbado' by E. Nazareth. The score is written on seven staves. The first staff contains the title and composer information. The second staff begins with a treble clef, a key signature of one sharp (F#), and a 3/4 time signature. The music consists of eighth and sixteenth notes, with some rests. The third staff continues the melody. The fourth staff features a series of slanted lines, possibly indicating a specific rhythmic pattern or a section of the piece. The fifth staff ends with a double bar line and the word 'Fin'. The sixth and seventh staves continue the musical notation, with the seventh staff ending with a double bar line and the word 'Tutu'.

Four empty musical staves, each consisting of five horizontal lines, located at the bottom of the page.