

Supplicia do coração

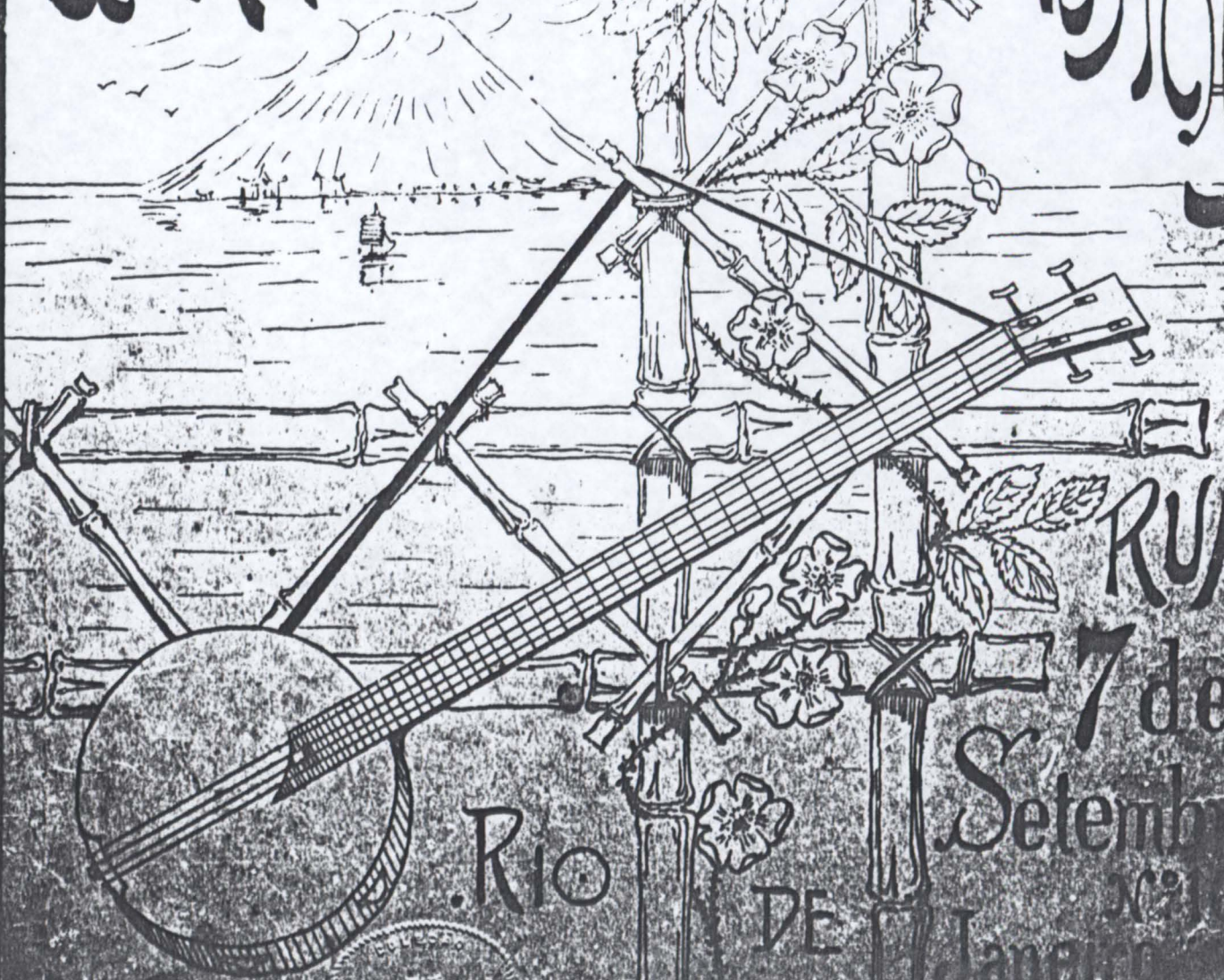
P9696

ASA

PIANOS

GUERREIRO

MUSICA



RIO

DE

RUA
7 de
Setembro
Nº 10
Janeiro



SUPPLICA DO CORAÇÃO

VALSA

Oferecida a Ex.^{ma} Viuva Guerreiro

PEDRO DE SÁ PEREIRA

dolce *p*

cresc.

1. *2.* *scherzando*



1. Musical notation system 1, featuring a treble and bass clef staff with various notes and rests.

2. Musical notation system 2, featuring a treble and bass clef staff with various notes and rests.

3. Musical notation system 3, featuring a treble and bass clef staff. Includes dynamic markings *ff* and *p*, and performance instructions *D.C. al* and *Fin*. The word *Simplice* is written above the staff.

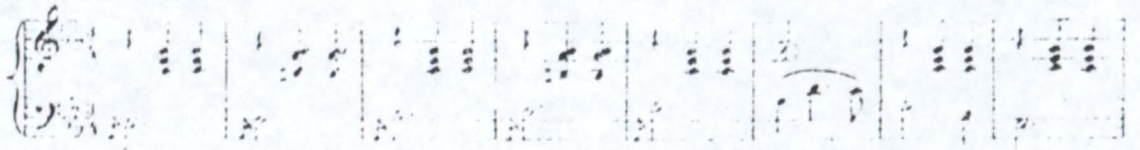
4. Musical notation system 4, featuring a treble and bass clef staff. Includes dynamic markings *p* and *crsc.*, and the word *len.* above the staff.

5. Musical notation system 5, featuring a treble and bass clef staff. Includes dynamic markings *ff* and *p*.

6. Musical notation system 6, featuring a treble and bass clef staff with various notes and rests.

ULTIMAS NOVIDADES MUSICAES

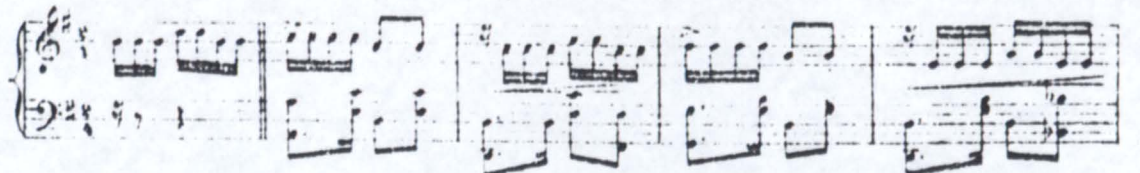
VALSA
Sorrir dormindo
L.SÁ PEREIRA



VALSA
Maria Antonietta
FREIRE JUNIOR



TANGO
Tudo na rua
M.SILVEIRA



VALSA
Tuas caricias
A.M. BORGES



VALSA
Amor sacrificado
FREIRE JUNIOR



SCHOTTISCH
Olhar divino
P.SÁ PEREIRA



VALSA
Amor comprometido
FREIRE JUNIOR



VALSA
Nas azas do amor
P.SÁ PEREIRA



VALSA
Amoro-la sempre
A.M. BORGES



VALSA
Amor sempre
FREIRE JUNIOR

