

Título

"PÉ NA TÁBUA" CHORO

Gênero:

Intérprete:

Altamiro Carmilho

Autor:

Altamiro Carmilho

Tonalidade:

VIVO

Flauta Solo
Saxo: AP4 os
1:3°
Tenores 2:4°
Saxo Alto
Guitarra
Viola
C. Baixo
Bateria

Musical score for instruments: Flauta Solo, Saxo (AP4 os, Tenores 2:4°, Saxo Alto), Guitarra, Viola, C. Baixo, Bateria. The score is in 2/4 time and D major. A vertical red line is drawn between the 4th and 5th measures. Above the 5th measure, the word "Solo" is written in red. Below the 5th measure, the word "Ritmo" is written in black with arrows pointing to the bass and drum parts. Below the 6th measure, the word "Ritmo" is written in red.

Solo

Musical score for Solo and Saxo. The Solo part is written on a single staff with a treble clef. The Saxo part is written on a single staff with a treble clef. The Solo part begins in the 5th measure and continues through the 7th measure. The Saxo part continues through the 7th measure. A vertical blue line is drawn between the 6th and 7th measures. Above the 7th measure, the word "Solo" is written in blue. Above the 7th measure, the word "Ritmo" is written in red. Above the 7th measure, the word "1 2 3 4 5 6 7" is written in red.

Guitar
CASADO CHORO

Viol.
c. B.
Bater.

↓	↓	↓	↓	↓	↓	↓	↓	↓

solo
saxo

2º-4º Ev **A** *solo*

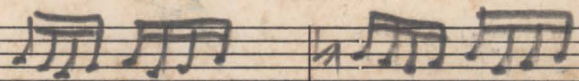
Guitar
Viol.
c. B.
Bater.

↓	↓	↓	↓	↓	↓

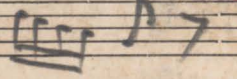
Orquestrador

Nelson

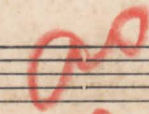
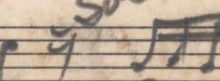
Sol. st.



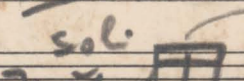
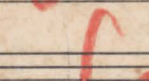
1^a 2^a 4^a 6^a



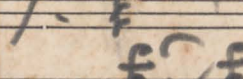
2^a solo



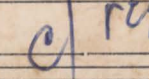
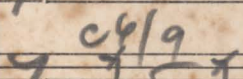
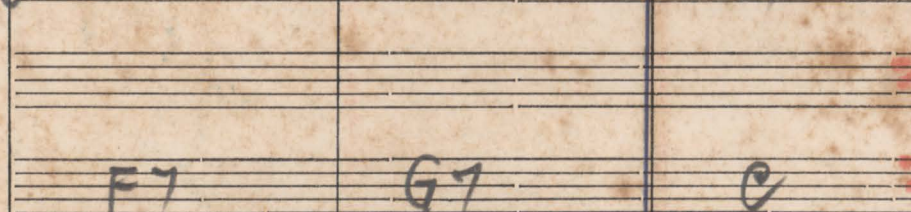
Saxo:



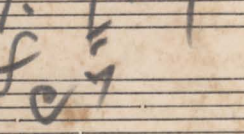
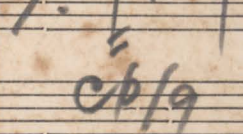
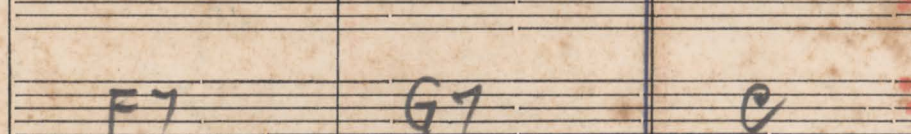
Guitar



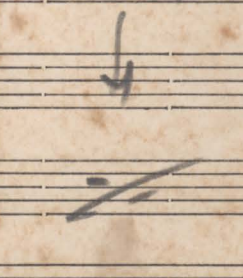
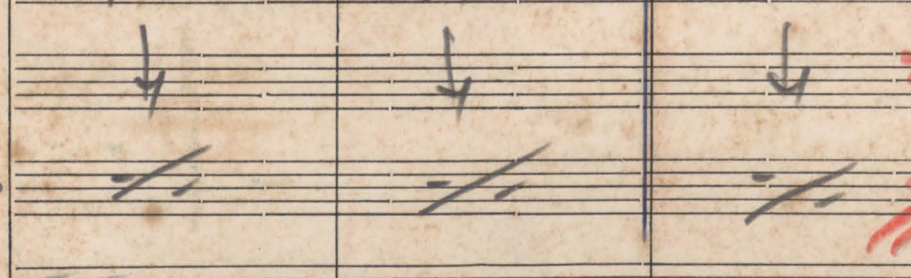
Viol.



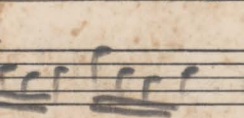
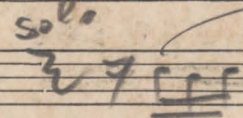
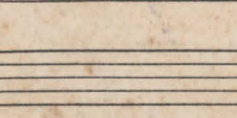
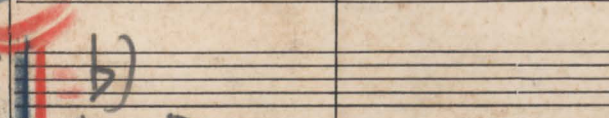
e. B.



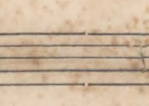
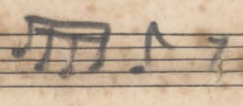
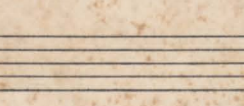
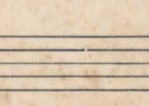
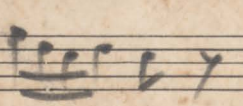
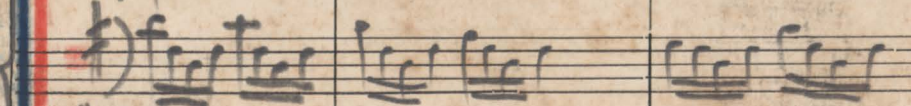
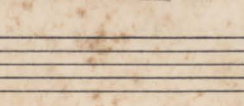
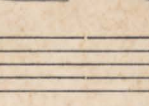
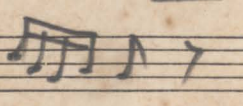
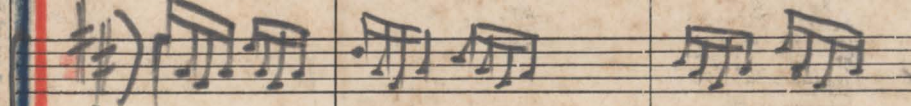
Bater.



Sol. st.



Saxo:



cl rep.



Guitar: b
 Viol. b $F7 + G7$ $F6$ $D7$ $G6$ Gm $G7$
 c. 13. b \downarrow \downarrow \downarrow \downarrow \downarrow \downarrow
 Bater. $\frac{1}{4}$ $\frac{2}{4}$ $\frac{3}{4}$ $\frac{4}{4}$ $\frac{5}{4}$ $\frac{6}{4}$

Solist. f f f f f f f f f f f f f f f f f f f f f f f f
 Saxs. $\#d$ $\#d$ $\#d$
 $\#d$ $\#d$ $\#d$

Guitar $e7$ $F6/9e7$ F Gm F $F\#dim$ Gm
 Viol. \downarrow \downarrow \downarrow \downarrow \downarrow \downarrow
 c. 13. $\frac{7}{4}$ $\frac{8}{4}$ $\frac{9}{4}$ $\frac{10}{4}$ $\frac{11}{4}$ $\frac{12}{4}$
 Bater. $\frac{7}{4}$ $\frac{8}{4}$ $\frac{9}{4}$ $\frac{10}{4}$ $\frac{11}{4}$ $\frac{12}{4}$

Gênero:

Intérprete:

Tonalidade:

Solo

Saxo.

Guilh.

Viol.

O.B.

Bater.

Solo

Saxo.

Handwritten musical score for saxophone and guitar. The score is divided into two systems. The first system contains measures 13, 14, and 15. The second system contains measures 16 and 17. The saxophone part is written on a single staff with various notes and rests. The guitar part is written on a single staff with chords and fret numbers. There are handwritten annotations in blue and red ink throughout the score, including "Solo", "Saxo.", "Guilh.", "Viol.", "O.B.", "Bater.", and "Solo" written vertically on the left side. The score is on aged, yellowed paper.

1º viol

2º

solo

solo

solo

7/6

no

diret

Φ

f

no

no

