

SONATINA

PAVINY FILHO, RIO 80

Para Flauta e Violão ou Piano

Radamés Gnatta

Doc/Simplicidade

Handwritten musical notation on a single staff. Includes notes, rests, and dynamic markings such as *p*, *mf*, and *f*. Chord symbols like *Cm*, *Fm*, and *Bm* are written above the staff. A circled number '5' is at the end of the line.

Handwritten musical notation on a single staff. Includes notes, rests, and dynamic markings such as *p*, *mf*, and *f*. Chord symbols like *Cm*, *Fm*, and *Bm* are written above the staff. A circled number '10' is at the beginning of the line.

Handwritten musical notation on a single staff. Includes notes, rests, and dynamic markings such as *p*, *mf*, and *f*. Chord symbols like *Cm*, *Fm*, and *Bm* are written above the staff. A circled number '15' is at the beginning of the line.

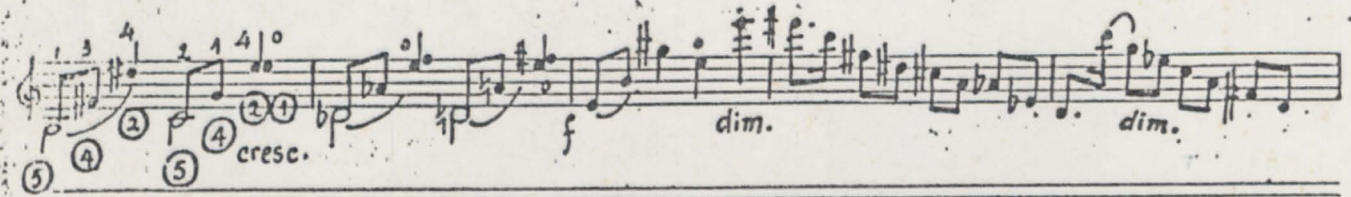
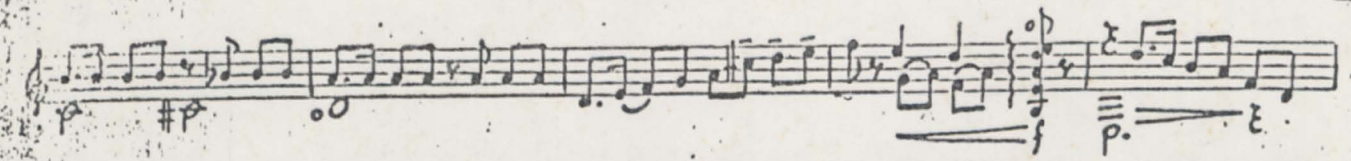
Handwritten musical notation on a single staff. Includes notes, rests, and dynamic markings such as *f*. Chord symbols like *Cm*, *Fm*, and *Bm* are written above the staff. Circled numbers '20' and '25' are present.

Handwritten musical notation on a single staff. Includes notes, rests, and dynamic markings such as *cresc.*, *mf*, and *f*. Chord symbols like *Cm*, *Fm*, and *Bm* are written above the staff. A circled number '30' is at the beginning of the line. The text 'Rall...' and 'dim....' is written above the staff.

Handwritten musical notation on a single staff. Includes notes, rests, and dynamic markings such as *p*, *mf*, and *f*. Chord symbols like *Cm*, *Fm*, and *Bm* are written above the staff. The text 'A Tempo' is written above the staff. A circled number '2' is at the beginning of the line.

Handwritten musical notation on a single staff. Includes notes, rests, and dynamic markings such as *cresc.*, *f*, and *mf*. Chord symbols like *Cm*, *Fm*, and *Bm* are written above the staff. A circled number '3' is at the beginning of the line.

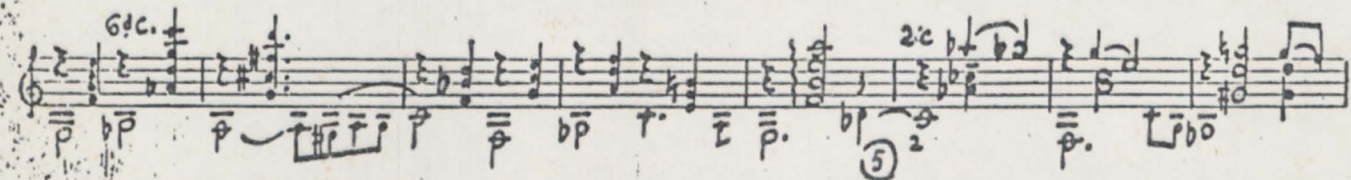
Handwritten musical notation on a single staff. Includes notes, rests, and dynamic markings such as *f* and *mf*. Chord symbols like *Cm*, *Fm*, and *Bm* are written above the staff. A circled number '5' is at the end of the line.



LENTO 1/84



TEMPO IV



RALL - LENTO



CARAdoCHORO

First musical staff with notes and dynamics: *p.*, *cresc.*, *mf*.

Second musical staff with notes and dynamics: *f*.

ADAGIO 1.50 *mf* (no cavalete):

Third musical staff with notes and dynamics: *mf*.

A TEMPO

Fourth musical staff with notes and dynamics: *poco accel.*, *cresc. rit.*

Fifth musical staff with notes and dynamics: *p.*, *cresc.*, *f*, *poco più*, *dim.*

Sixth musical staff with notes and dynamics: *poco rall.*, *6c 5*, *4c*, *op.*, *poco excell.*, *poco più*.

TEMPO 1:

Seventh musical staff with notes and dynamics: *Cresce.*

pp kp. *dim.* **5** *cresc. poco accel.*

mf *p* **4ac.** **6**

f *dim.* *p* **5**

cresc. *dim.* *p* *cresc.* *mf*

p *mf* *p* **5**

p *mf* *p* **6ac.** *poco accel... cresc. a rall...*

ATEMPO

mf *p* *p* *cresc.* *mf*

CASA do CHORO

Flauto DO: 116

pp rall.

III

3.c.

no cavalete

dim.

(5) (5) (4)

p cresc.

f

son natural

5.c.

3.c.

4.c.

p

cresc.

GRAND CHORO

Musical staff with notes and lyrics "f no cevalete". The staff contains a series of notes with various accidentals (flats and naturals) and dynamic markings.

Musical staff with notes and dynamic markings "f ced. e dim.". The staff shows a melodic line with various accidentals and dynamic changes.

POCO MENOS $\text{♩} = 96$

Musical staff with notes and dynamic markings "p". The staff features a melodic line with various accidentals and a piano dynamic marking.

Musical staff with notes and dynamic markings "p". The staff shows a melodic line with various accidentals and a piano dynamic marking.

Musical staff with notes and dynamic markings "f". The staff features a melodic line with various accidentals and a forte dynamic marking.

Musical staff with notes and dynamic markings "f". The staff shows a melodic line with various accidentals and a forte dynamic marking.

Musical staff with notes and dynamic markings "p". The staff features a melodic line with various accidentals and a piano dynamic marking.

LENTO

CRISTÓBAL CHORO

12c.
rall... (2)

dim. rall. (2)

(2) (1) (1)

mf (2) (1) - (2) (4) (5) dim.

poco rall. (2) (1)

POCO MENOS $\text{♩} = 46$

pp

5c

MOVIDO 1:16

CASA

Handwritten musical notation on a single staff, featuring a treble clef, a key signature of one flat, and a 4/4 time signature. The notation includes various notes, rests, and dynamic markings such as *f*, *seco*, and *dim.*. There are also fingerings '1' and '3' and a circled '1' below the staff.

Handwritten musical notation on a single staff, featuring a treble clef, a key signature of one flat, and a 4/4 time signature. The notation includes various notes, rests, and dynamic markings such as *mf*.

Handwritten musical notation on a single staff, featuring a treble clef, a key signature of one flat, and a 4/4 time signature. The notation includes various notes, rests, and dynamic markings such as *p*.

Handwritten musical notation on a single staff, featuring a treble clef, a key signature of one flat, and a 4/4 time signature. The notation includes various notes, rests, and dynamic markings such as *p* and *5c.*.

Handwritten musical notation on a single staff, featuring a treble clef, a key signature of one flat, and a 4/4 time signature. The notation includes various notes, rests, and dynamic markings such as *4c.*.

Handwritten musical notation on a single staff, featuring a treble clef, a key signature of one flat, and a 4/4 time signature. The notation includes various notes, rests, and dynamic markings such as *p*, *pp*, and *cresc.*.

Handwritten musical notation on a single staff, featuring a treble clef, a key signature of one flat, and a 4/4 time signature. The notation includes various notes, rests, and dynamic markings such as *Vire rapido*.

CASINO

f no cavalete

p A

Cópia de: F. Paes de Oliveira
Rio - 31/7/1979

fm.: 248-7469.