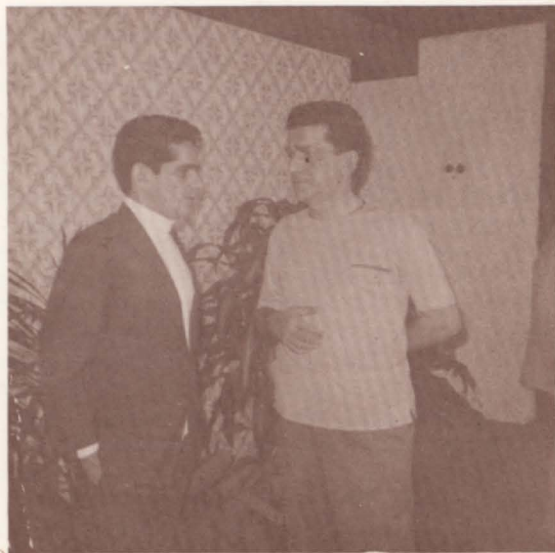
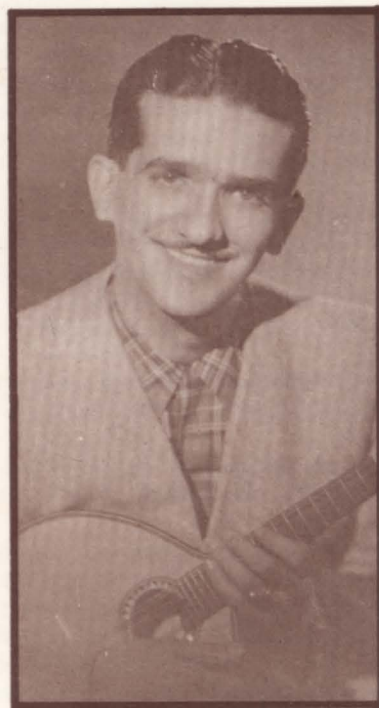

JACOB DO BANDOLIM

E

SÉRGIO BITTENCOURT



Sérgio Bittencourt e
Jacob do Bandolim (1968)



SAPECA

frêvo

BANDOLIM

de: Jacob Bittencourt

3

AO E

Jacob Bittencourt
CASA do CHORO

SAPECA

frêvo

de: Jacob Bittencourt

VIOLÃO

The musical score for guitar (VIOLÃO) for the piece "SAPECA" by Jacob Bittencourt is presented in 2/4 time. The score is divided into a melody line (top) and a guitar accompaniment line (bottom). The melody line begins with a treble clef and a key signature of one flat (B-flat). The guitar accompaniment line begins with a bass clef and a key signature of one flat. The score includes various chords such as Dm, A7, Dm7, B7, D7, and Gm. There are also dynamic markings like '>' and 'A0'.

Chord progression for the accompaniment line:

- Line 1: Dm, A7, Dm, A7, D7, Gm
- Line 2: Dm, A7, Dm, A7, Dm, A7
- Line 3: D7, Gm, Dm, A7, 1. Dm, 2. Dm
- Line 4: A7⁹⁻, A7, Dm, Dm, Dm, A7
- Line 5: A7, Dm, Dm, D7, D7, Gm
- Line 6: Gm, Dm, A7, D7, Gm, Dm
- Line 7: A7, 1. Dm, 2. Dm, A0, E, Dm