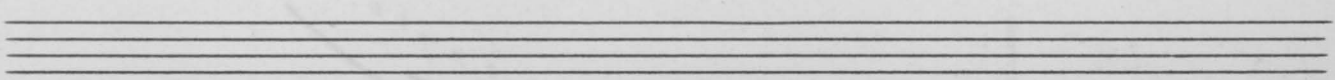
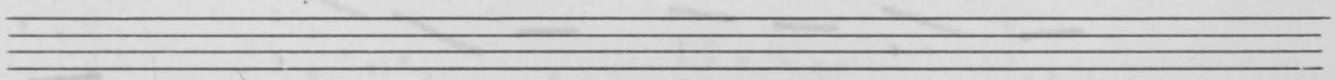
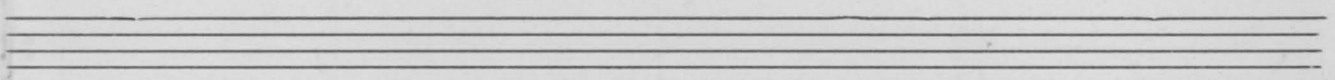
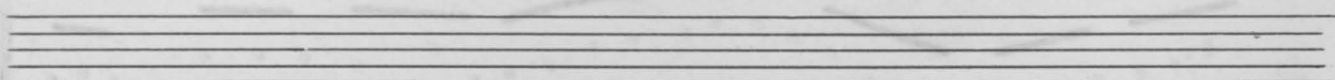
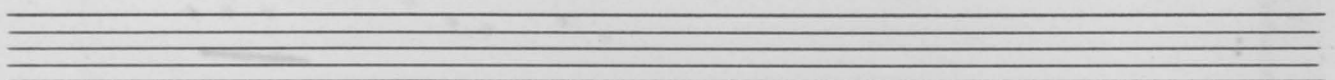
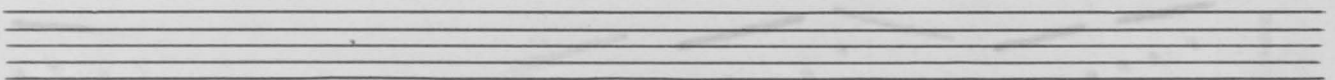
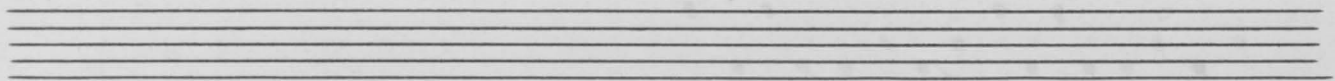
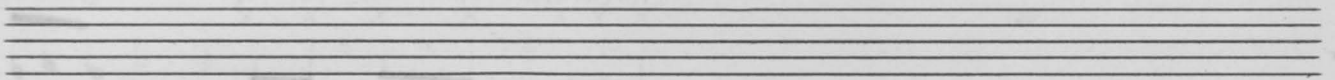


CHA-CHA-CHORO

Por Antonio Balan



CHA-CHA-CHÔRO

Música de Antonio Balan

ON-D

BATERIA
ROLO

CHA-CHA-CHÔ-RO

CHA-CHA-CHA

CHA-CHA-CHÔ-RO

CHÔRO

MÉDIO

1:

2:

1^a 2^a

Handwritten musical notation for the first system. It consists of two staves: a treble staff and a bass staff. The treble staff contains a melodic line with several triplets. The bass staff contains a bass line with triplets. Above the first measure, there is a first ending bracket labeled "1^a". Above the second measure, there is a second ending bracket labeled "2^a".

Handwritten musical notation for the second system. It consists of two staves: a treble staff and a bass staff. The treble staff contains a melodic line with a fermata over the second measure. The bass staff contains a bass line.

Handwritten musical notation for the third system. It consists of two staves: a treble staff and a bass staff. The treble staff contains a melodic line with a fermata over the second measure. The bass staff contains a bass line.

Handwritten musical notation for the fourth system. It consists of two staves: a treble staff and a bass staff. The treble staff contains a melodic line with lyrics "CHA-CHA-CHA CHA-CHA" written above it. The bass staff contains a bass line.

- CHÔ-RO

1^a 2^a

Handwritten musical notation for the fifth system. It consists of two staves: a treble staff and a bass staff. The treble staff contains a melodic line with lyrics "CHÔ-RO" written above it. The bass staff contains a bass line. Above the first measure, there is a first ending bracket labeled "1^a". Above the second measure, there is a second ending bracket labeled "2^a".

BATERIA

ROLO

mf *p.p.*

Handwritten musical notation for the sixth system. It consists of two staves: a treble staff and a bass staff. The treble staff contains rhythmic notation with the title "BATERIA" and "ROLO" written above it. The bass staff contains a bass line. Dynamics markings "*mf*" and "*p.p.*" are present.