

# SAMBA EM TOM MENOR

## INTRO

Musical notation for the first system of the introduction. It consists of two staves. The top staff is in treble clef and contains a melodic line with notes and rests. Above the staff are the chords **Dm** and **Am**. The bottom staff is in bass clef and contains a bass line with notes and rests. Above the staff are the chords **F7** (with "(FLAUTA)" written below it), **E7**, **Am**, and **(E7)**. There are bar lines and repeat signs throughout the system.

Musical notation for the second system, consisting of a single staff with chords: **Am**, a bar line, **1. Dm**, a bar line, and **2. Bb7M/A**.

Musical notation for the third system, consisting of a single staff with chords: **Am**, a bar line, **Bm7(b5)**, a bar line, and **E7**.

Musical notation for the fourth system, consisting of a single staff with chords: **Em7(b5)**, a bar line, **A7**, a bar line, **Dm**, a bar line, and a repeat sign.

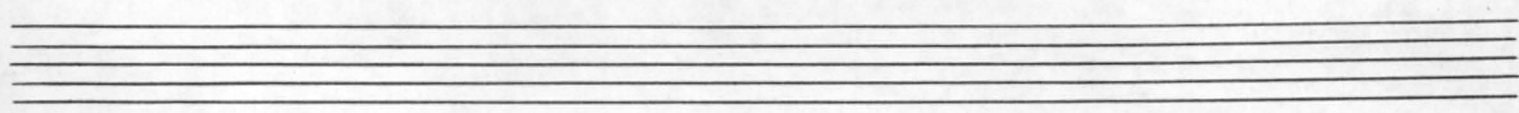
Musical notation for the fifth system, consisting of a single staff with chords: **Am**, a bar line, a repeat sign, a bar line, **Bm7(b5)**, a bar line, and **E7**.

Musical notation for the sixth system, consisting of a single staff with chords: **G7**, a bar line, a repeat sign, a bar line, **C**, a bar line, and a repeat sign.

Musical notation for the seventh system, consisting of a single staff with chords: **Bm7(b5)**, a bar line, **E7**, a bar line, **Am**, a bar line, and **A7**.

Musical notation for the eighth system, consisting of a single staff with chords: **Dm**, a bar line, a repeat sign, a bar line, **Am**, a bar line, and a repeat sign.

Musical notation for the ninth system, consisting of a single staff with chords: **F7**, a bar line, **E7**, a bar line, **Am**, a bar line, and a repeat sign. A **(E7)** is written above the end of the staff.



CASABUCCI PRO

PRIMA TERMINAR

INTRO : SANFONA

2x A

B

2x A

B

⊕ (PRIMA TERMINAR)