

← " O ORELHA " →

(-CHORO PARA CLARINETE E PIANO)

E. VILLANI - CÔRTEZ (1983)

(p/o meu filho ED CÔRTEZ)

O ORELHA

E. VILLANI-CÖRYES
(07/01/83)

(B^b)



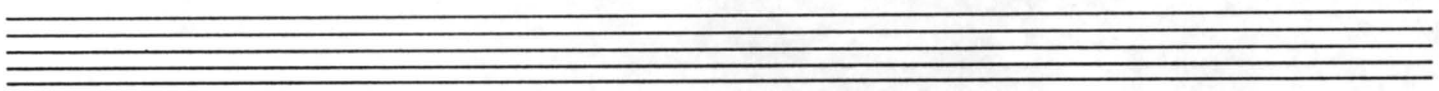
CLARINETE I

2/4

1. 2.

1. 2.

1. 2.



Handwritten musical score for guitar, first system. It consists of seven staves of music. The first staff begins with a treble clef and a key signature of one flat (B-flat). The music features various rhythmic patterns, including eighth and sixteenth notes, and includes several triplet markings (indicated by a '3' over a bracket). The piece concludes with a double bar line and a final chord in the key of B-flat.

Handwritten musical score for guitar, second system. It consists of two staves of music. The first staff begins with a treble clef and a key signature of two flats (B-flat and E-flat). The music continues with similar rhythmic patterns and includes a triplet marking. The second staff concludes with a double bar line and a final chord in the key of B-flat.

E. Villani Cantor