

P3344
Luiz Tatuma

Suite - Nazare

(Para Violão solo)

- 1 - Prelúdio
- 2 - Valsa
- 3 - Chorinho
- 4 - Velha seresta

Escrita no ano do centenário de Ernesto Nazare e dedicada a Mozart Araujo, que, além de violonista, tanto tem feito pela musica brasileira.

Ek

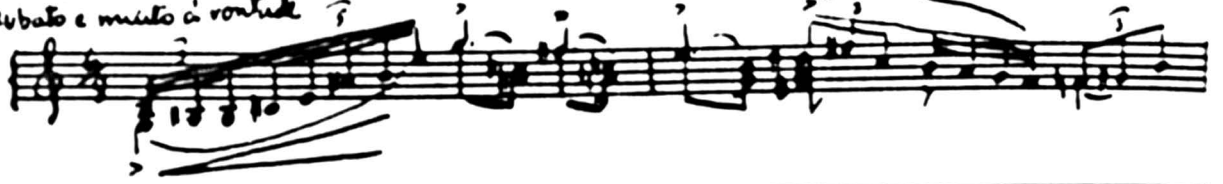
(A autora pede que se
empregue de preferência,
cordas de metal, usando
nova Radigão...)

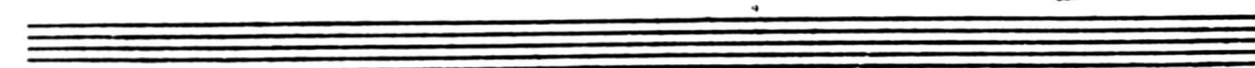
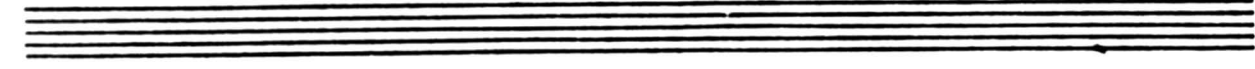
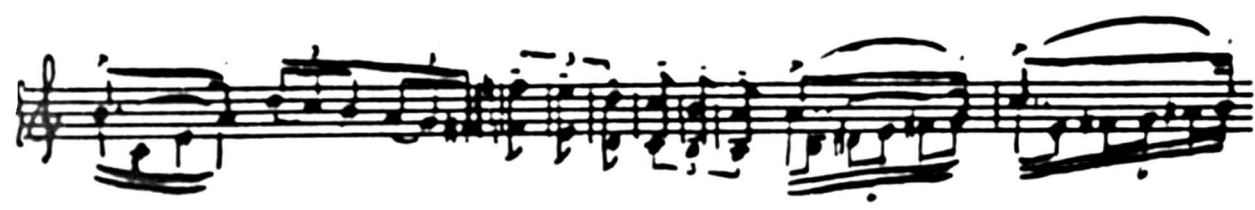
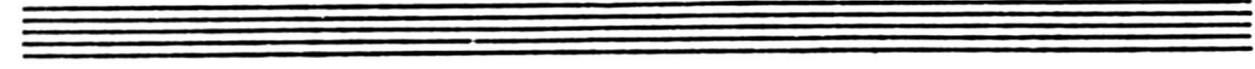
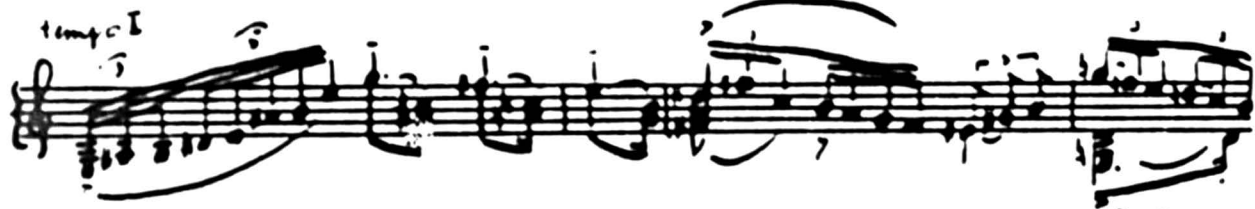
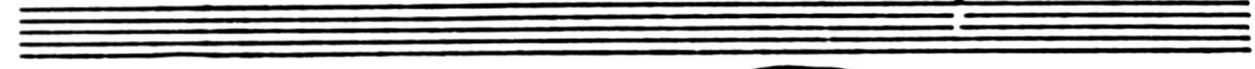
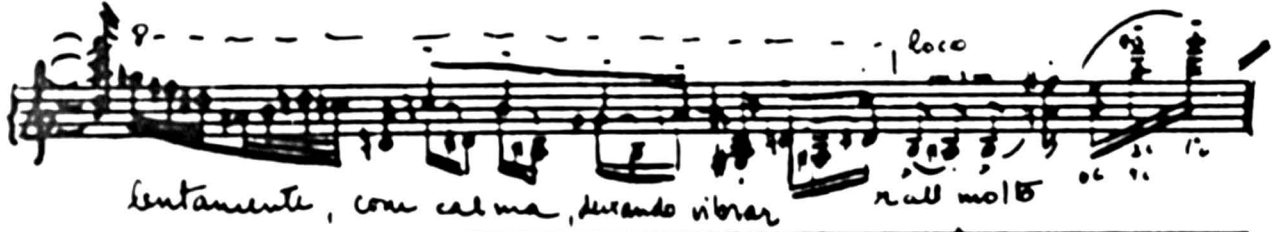
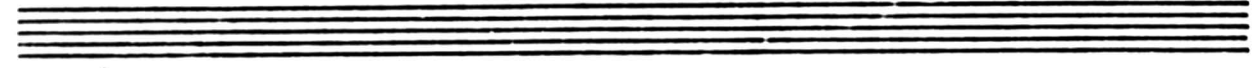
SUITE NAZARE: (aniversário do seu nascimento)
(Para violão solo)

Zunier Katani
op. 100 n. 4 (1971)

I) - PRELUDIO

Andato e muito à vontade

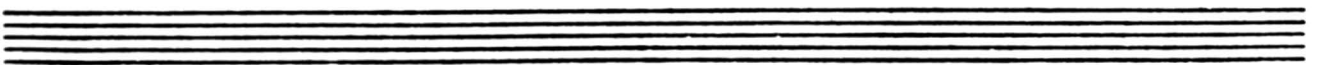
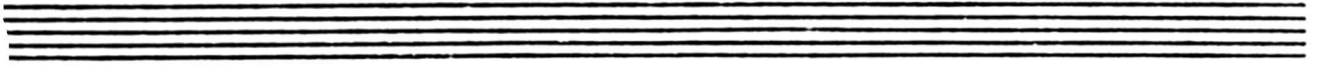
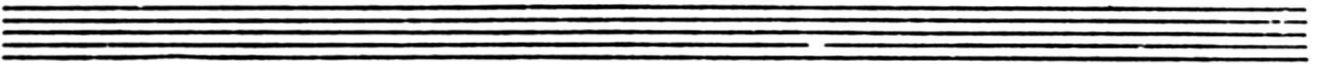
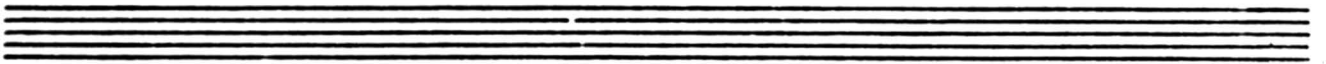
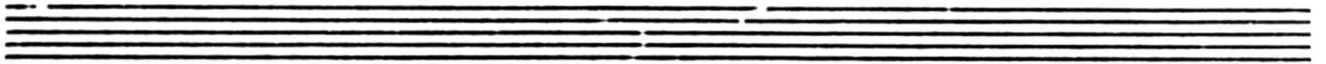




pp intenso
mas. lixa vibrat

I - II - III

II) VALSA
calmo, cantante

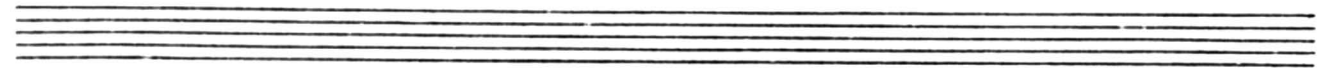


Handwritten musical score for a choral piece, page 5. The score consists of eight systems, each with a vocal line and a piano accompaniment line. The notation includes various rhythmic values, accidentals, and dynamic markings. The piece concludes with the instruction "marcato e rall".

mu to animado



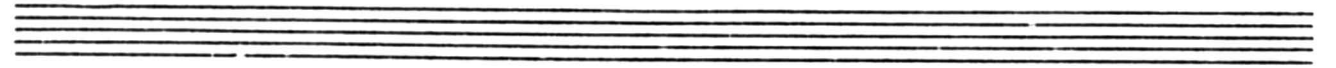
Handwritten musical notation on a single staff, featuring a complex rhythmic pattern with many beamed notes and rests. Dynamic markings *sfz* are present at the beginning and middle of the staff.



Two empty musical staves.



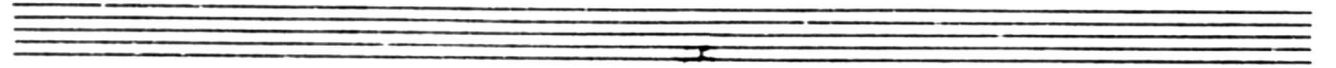
Handwritten musical notation on a single staff, continuing the complex rhythmic pattern. Dynamic markings *sfz* are present at the beginning and end of the staff.



Two empty musical staves.



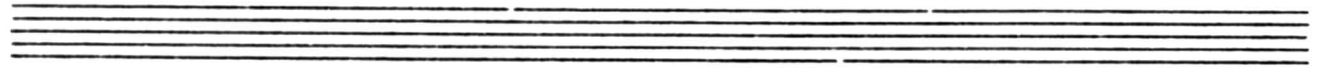
Handwritten musical notation on a single staff, featuring a complex rhythmic pattern. A dynamic marking *sfz* is present in the middle of the staff.



Two empty musical staves.



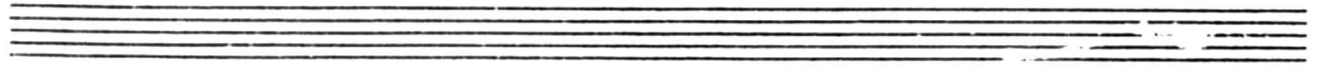
Handwritten musical notation on a single staff, featuring a complex rhythmic pattern with many beamed notes and rests. Dynamic markings *sfz* are present at the beginning and end of the staff.



Two empty musical staves.



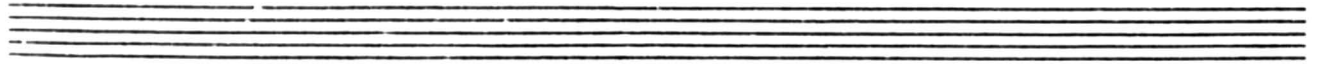
Handwritten musical notation on a single staff, featuring a complex rhythmic pattern with many beamed notes and rests. Dynamic markings *sfz* are present at the beginning and end of the staff.



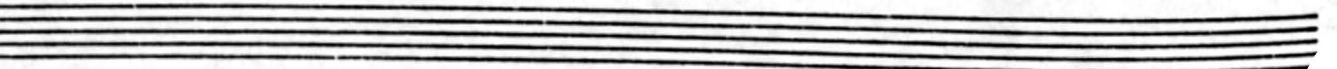
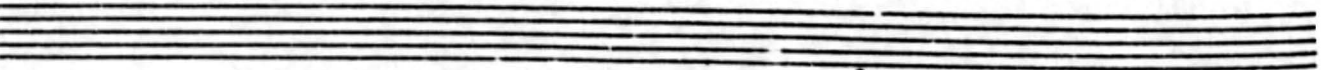
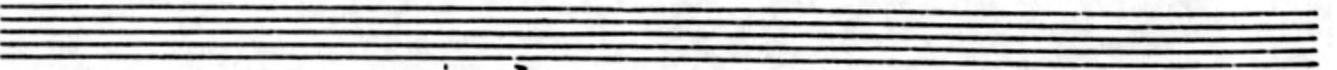
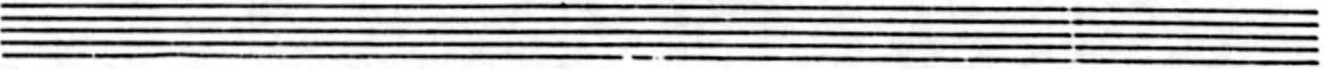
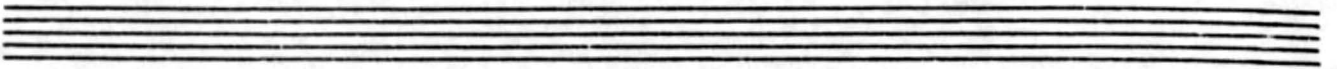
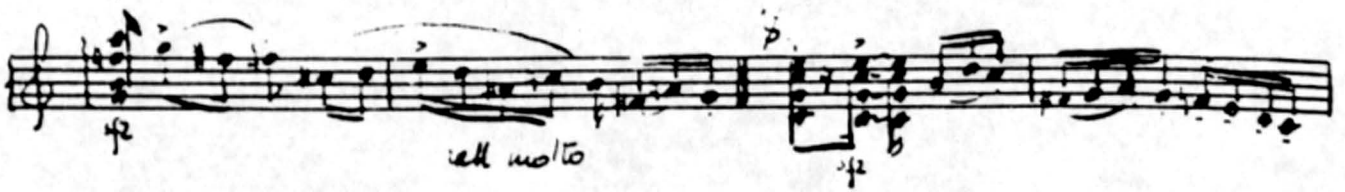
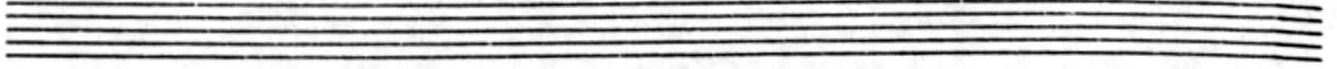
Two empty musical staves.



Handwritten musical notation on a single staff, featuring a complex rhythmic pattern with many beamed notes and rests. Dynamic markings *sfz* are present at the beginning and end of the staff.



Two empty musical staves.



Handwritten musical notation on a single staff. It features a series of eighth and sixteenth notes, some beamed together, with various rests and dynamic markings.

A set of three empty musical staves, consisting of three parallel horizontal lines.

Handwritten musical notation on a single staff. It features a series of eighth and sixteenth notes, some beamed together, with various rests and dynamic markings.

A set of three empty musical staves, consisting of three parallel horizontal lines.

Handwritten musical notation on a single staff. It features a series of eighth and sixteenth notes, some beamed together, with various rests and dynamic markings.

A set of three empty musical staves, consisting of three parallel horizontal lines.

Handwritten musical notation on a single staff. It features a series of eighth and sixteenth notes, some beamed together, with various rests and dynamic markings.

A set of three empty musical staves, consisting of three parallel horizontal lines.

Handwritten musical notation on a single staff. It features a series of eighth and sixteenth notes, some beamed together, with various rests and dynamic markings.

A set of three empty musical staves, consisting of three parallel horizontal lines.

Handwritten musical notation on a single staff. It features a series of eighth and sixteenth notes, some beamed together, with various rests and dynamic markings.

A set of three empty musical staves, consisting of three parallel horizontal lines.

al. f sino al fin.

(...ll molto)

IV) - VELHA SERESTA

E JOI - TE PLE - MI - LU - NID E LU - NID JO - VHO AI -

*NOTA

- SIM, TÃO - TONHO DO - IAU - DO PE - LOA - ZUL, U - JAN - DOO

MRA ... ES - TÁ - LA NO LÉU BA.

NOTA: Propositamente a autora não submete esta música à carga de compassos, com vista do caráter da seresta e da liberdade da forma, na qual se deve dar plena expressão aos esforços notonísticos.

EMAN JOA - AN - DO ES - TAE DOR - MI DO

EM BU VE - JHO

Handwritten musical notation for the first system, featuring a treble clef and a melodic line with various ornaments and slurs.

MEU A - GUA, TE DES - PER - I...

Handwritten musical notation for the second system, including dynamic markings like 'p' and 'affrett'.

Handwritten musical notation for the third system, featuring a treble clef and a melodic line with a large slur.

DE LO

Handwritten musical notation for the fourth system, including dynamic markings like 'f' and 'pp'.

AO LU - AR...

MAE SUS - PI - RA

Handwritten musical notation for the fifth system, featuring a treble clef and a melodic line with various ornaments.

GA ... TRACHE...

Handwritten musical notation for the sixth system, featuring a treble clef and a melodic line with various ornaments.

E LA NO ALTO O LEU A - ZUL SOR -

-RIN - DO LINDO... A - LOR - - DA

A - BREA JA - VE - LA , STE - LA ! E NO ALTO O

LEU A - ZUL SOR - RIJ - US LINDO !

A LOR - DA ... A BREA JA - VE - LA , STE

LIT

D.C. *ad fine*