

Queijo de Ratoeira

Francisco Werneck

G7/B G7 Cm C7/E C7 F7 F7/A F7



Bb C7 F7 G7/B G7 Cm



C7/E C7 F7 Ab6 Bb7 Eb Ebm



Bb/F Em(b5)/F F7(b9) Bb Bb/F Cm F7 Bb D7



Gm

Fine



G7(4)

G7

Cm

G7

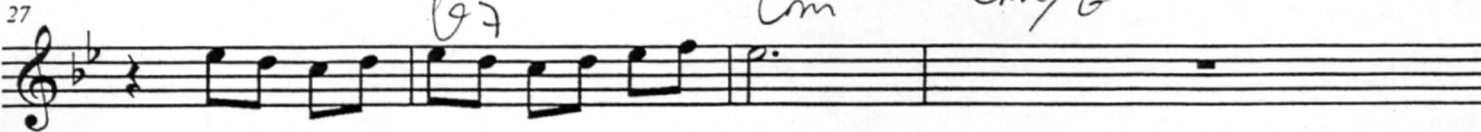


Cm

G7

Cm

Cm/6



Queijo de Ratoeira

31 D7 Gm D7

35 Gm *D* Gm Gm/b

39 ~~Gm~~ (b5) G7 Cm

43 Cm7 1. Cm6 Gm Gm/Bb

47 A7 D7 Gm

51 Cm7 Cm6 Gm Gm/Bb

55 A7 D7 Gm

D.C. al Fine